

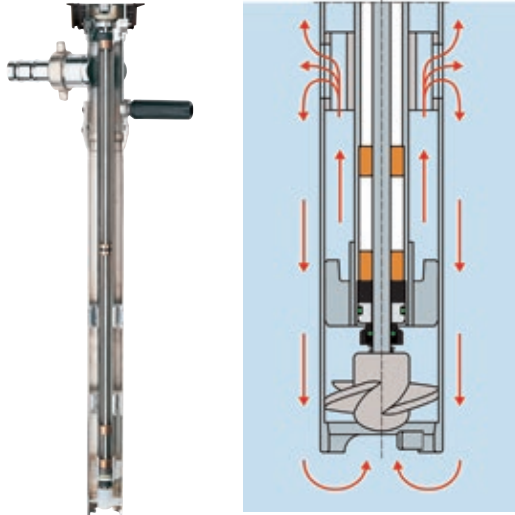
Technical Data Sheet

Drum pumps F 426



More than just pumps

Drum pumps F 426



Advantages/characteristics:

- ▶ For mixing and/or conveying inhomogeneous fluids
- ▶ Two control levers to easily open/close the mixing openings
- ▶ Mixing openings allow backflow of the media for mixing back in the container
- ▶ With mechanical seal for inner tube seal
- ▶ 3 operating modes in one pump: Conveying, conveying with simultaneous mixing, also temporary mixed operation
- ▶ Switching operating modes is possible while operating
- ▶ Easy to dismantle for cleaning
- ▶ Distinct feature: The inner tube is reinforced with a metal core on the PP-version
- ▶ Temporary operation against closed valve (e.g. hand nozzle) is possible (until the indicated max. operating temperature has been reached)



Technical data/type	F 426 PP	F 426 S
Seal type		Mechanical seal
Version		With impeller for max. flow rate
Pressure-side connection		Thread G 1 1/4 A
Materials		
Pump	Polypropylene	Stainless steel 316 Ti
O-ring ²⁾	FKM	FKM
Mechanical seal	Oxide ceramics, PTFE/coal, O-ring FKM	
Shaft	Hastelloy C	Stainless steel
Impeller		ETFE
Dimensions		
Outer tube diameter / Impeller diameter (mm)	50/33	41/38
Standard immersion depth (mm)	1 000, 1 200, 1 500	
Other immersion depths / special lengths (mm) ³⁾	500 - 2 000	
Operating range		
Container	Drums, IBCs, tanks, canisters, hobbocks, mixing containers etc.	
Media temperature (°C)	0 to +50	0 to +100
Media temperature ex-application (°C)	-	0 to +40
Ambient temperature (°C)	0 to +40	-20 to +40
Weight Ø 41, ID 1 000 mm (kg)	-	3.8
Weight Ø 50, ID 1 000 mm (kg)	1.8	-
Certificates		
Ex-identification	None	II 1/2 G c IIB T4
Silicone-free version		On request
Performance data¹⁾		
	Axial impeller	
Flow rate max. l/min.	240	
Delivery head max. mwc	13	
Viscosity max. mPas	1 200	

1) Dependent on pump version, medium and motor

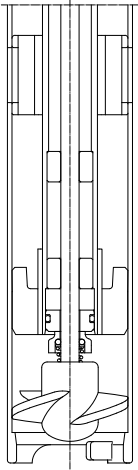
2) Other materials on request

3) In gradations of 100 mm

Design, function and dimensions

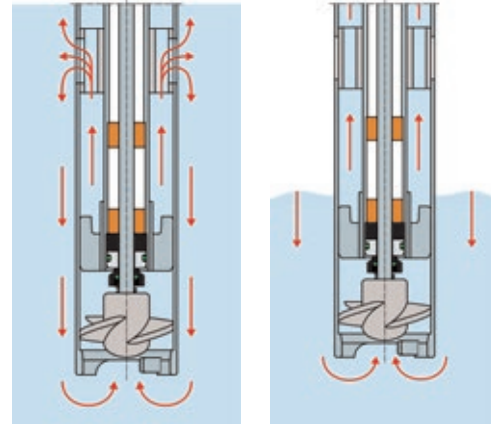
Drum pumps F 426

Design:



F 426 with mechanical seal and axial impeller

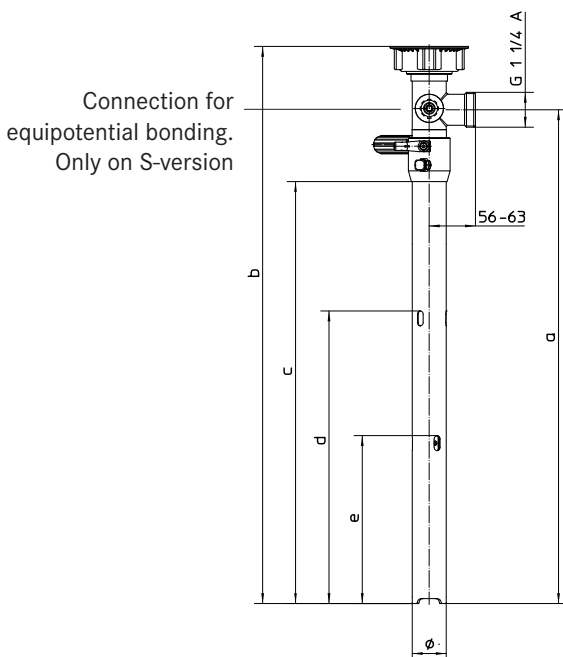
Function:



F 426 with open mixing openings (mixing) and closed mixing openings (pumping)

Dimensions:

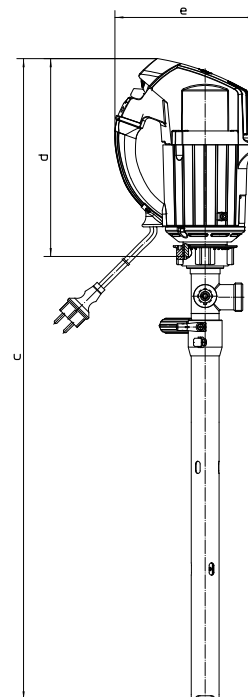
Drum pump F 426



Immersion depths (ID)

Pump material	Ø (mm) Outer tube/ impeller	ID					
		(mm)	a (mm)	b (mm)	c (mm)	d (mm)	e (mm)
PP	50/33	1 000	1 116	1 191	1 026	407	337
		1 200	1 316	1 391	1 226	407	337
		Other	ID + 116	ID + 191	ID + 26	407	337
S	41/38	1 000	1 106	1 181	1 018	352	202
		1 200	1 306	1 381	1 218	352	202
		Other	ID + 106	ID + 181	ID + 18	352	202

Drum pump with motor



F 426 with motor

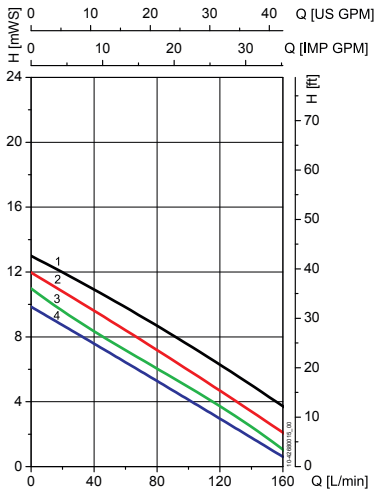
Motor type	c (mm)	d (mm)	e (mm)
FEM 4070	b + d - 16	207	186
F 457 (EL)		225	217
F 458 (-1, EL)		292	209
F 460 Ex (-1, EL)		292	209
FBM 4000 Ex		292	209
F 416 Ex		119	230
F 416-1 Ex		101	120
F 416-2 Ex		101	120

Performance diagrams¹⁾ & part numbers

Drum pumps F 426

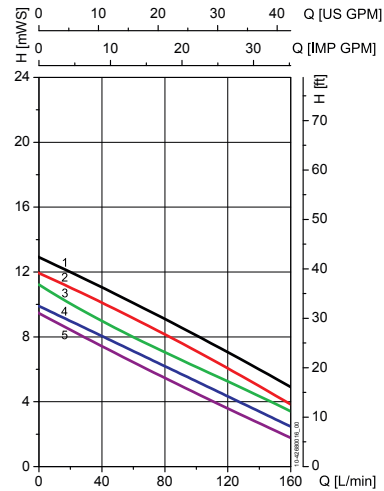
The following performance diagrams apply to the indicated impellers and motors, for all pump materials respectively.

Axial impeller Ø 33



- 1) F 416 Ex, F 416-1 Ex, F 416-2 Ex (6 bar)
- 2) F 457, F 457 EL, F 458-1, F 460-1 Ex
- 3) FBM 4000 Ex
- 4) FEM 4070, F 458, F 458 EL, F 460 Ex, F 460 Ex EL

Axial impeller Ø 38



- 1) F 416 Ex, F 416-1 Ex, F 416-2 Ex (6 bar)
- 2) F 457, F 457 EL, F 458-1, F 460-1 Ex
- 3) FBM 4000 Ex
- 4) FEM 4070
- 5) F 458, F 458 EL, F 460 Ex, F 460 Ex EL

Part numbers:

Standard immersion depths								
Type	Material			Diameter (mm)		Part no.		
	Pump	Shaft	O-ring	Ø outer tube	Ø impeller	1 000 mm	1 200 mm	1 500 mm
F 426 Connection thread G 1¼ A	PP	HC	FKM	50	33	10-426 40 001	10-426 40 002	10-427 40 003
			FKM	41	38	10-426 20 010	10-426 20 012	10-426 20 015
	S	S	FFKM			10-426 29 010	10-426 29 012	-

Other immersion depths/other O-rings/other connections on request

Hose connections with union nut G 1¼						
Connection	Material	Size				
		Union nut	DN 13	DN 19	DN 25	DN 32
Polypropylene (PP)	PP		10-959 04 081	10-959 04 053	10-959 04 052	10-959 04 054
Stainless steel (S) 316 Ti	Brass nickel-plated			10-959 04 061	10-959 04 041	10-959 04 042
Stainless steel (S) 316 Ti	S			10-959 04 062	10-959 04 063	10-959 04 064

1) Determined with water at 20 °C, measured values ± 10 % maximum flow rate with open discharge outlet

Accessories

Drum pumps F 426

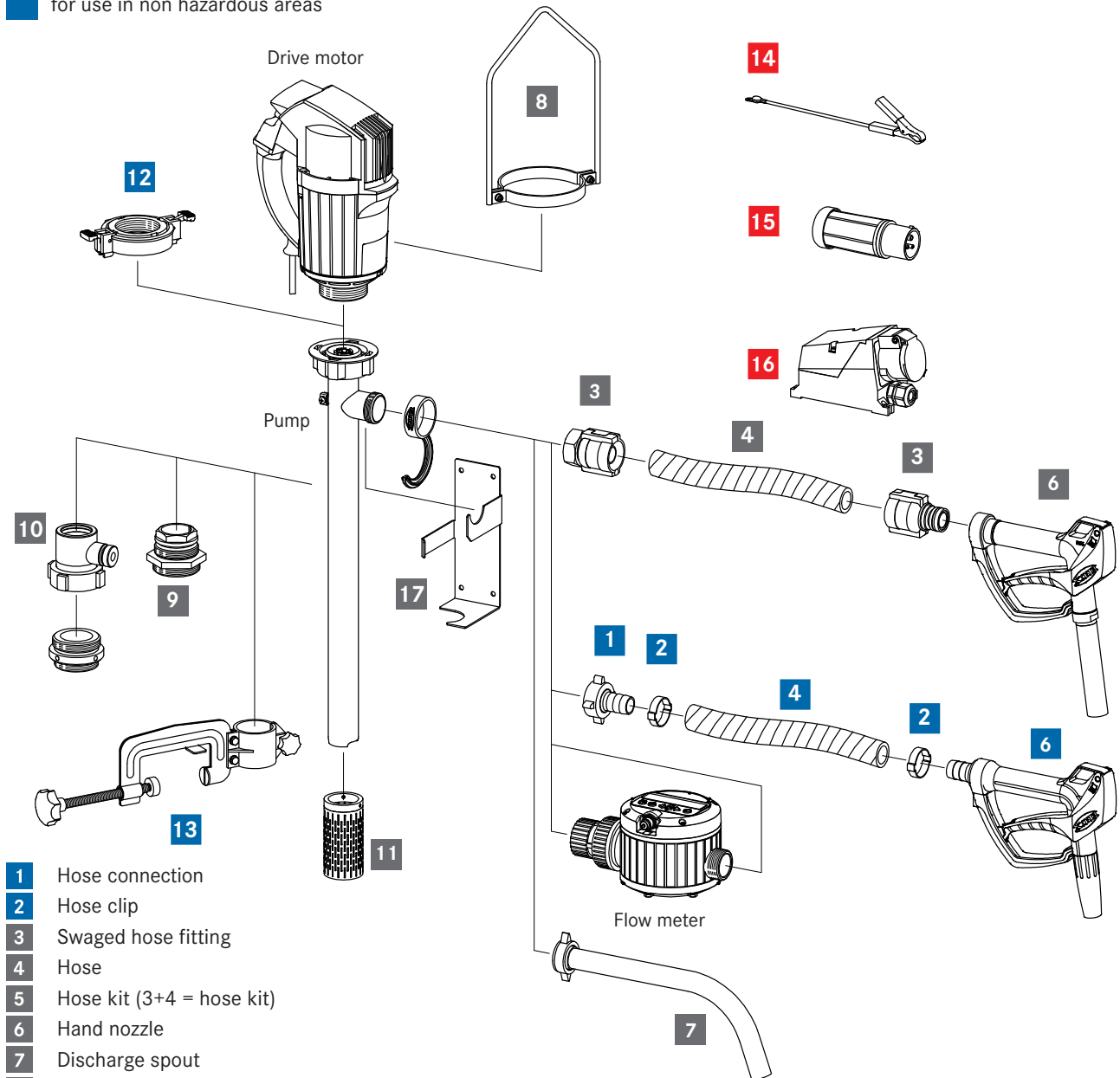
Accessories for drum pump F 426

Compatible with drum pumps from the F 426 series, we offer a wide selection of accessories, for example, compression glands, hoses, hand nozzles. More information can be found in the FLUX accessory brochure, in the price list or on our homepage: www.flux-pumps.com.

■ for use in hazardous areas

■ for use in hazardous and non hazardous areas

■ for use in non hazardous areas



- 1 Hose connection
- 2 Hose clip
- 3 Swaged hose fitting
- 4 Hose
- 5 Hose kit (3+4 = hose kit)
- 6 Hand nozzle
- 7 Discharge spout
- 8 Carrying handle
- 9 Compression gland
- 10 Fume gland
- 11 Suction strainer
- 12 Quick action coupling
- 13 Attachment clamp
- 14 Earth (ground) wire
- 15 Explosion-proof plug
- 16 Explosion-proof socket
- 17 Wall bracket

FLUX-GERÄTE GMBH

Talweg 12 · D-75433 Maulbronn

Tel +49 (0)7043 101-0 · Fax +49 (0)7043 101-444

info@flux-pumpen.de · www.flux-pumps.com