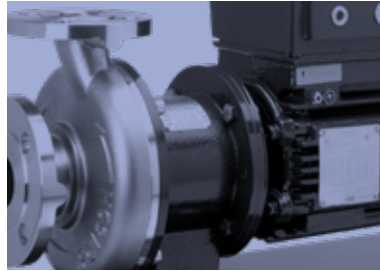
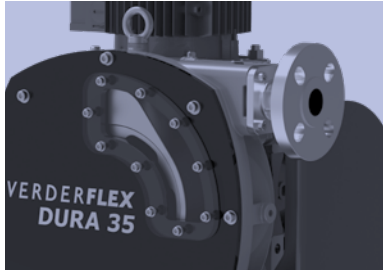
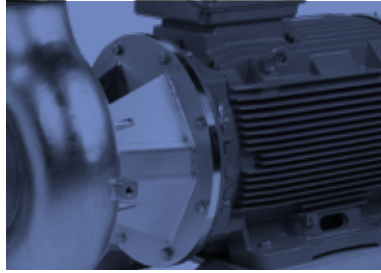


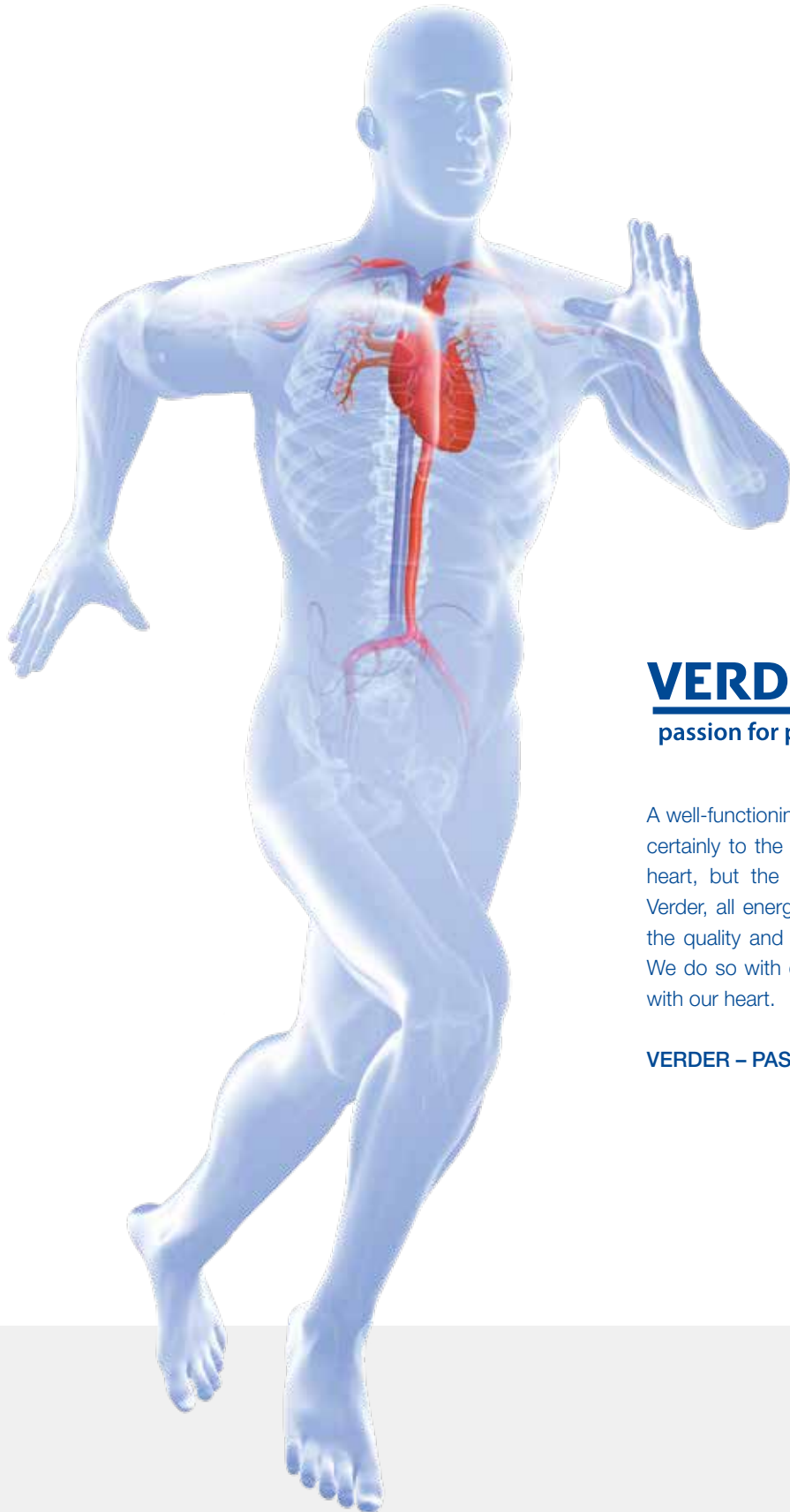
VERDER **AUSTRIA**



VERDER **PRODUCT OVERVIEW**

Peristaltic pumps | Air operated double diaphragm pumps | Stainless steel centrifugal pumps | Rotary lobe pumps
Circumferential piston pumps | Twin-screw pumps | Mag drive centrifugal pumps | Gear pumps | Piston diaphragm
pumps | Screw centrifugal pumps | Progressing cavity pumps | Static mixers | Pulsation dampeners





VERDER

passion for pumps

A well-functioning pump helps you succeed. That applies certainly to the most important pump in life, the human heart, but the same goes for pumps in business. At Verder, all energy and attention is focused on improving the quality and performance of our pumps and service. We do so with energy, dedication and most importantly, with our heart.

VERDER – PASSION FOR PUMPS



THE VERDER GROUP

- 1 Company
- 28 Countries
- 60 Years of expertise
- Global network
- Local distributors
- In-house service & maintenance
- A solution for every application

The Verder group is a family owned business formed over 55 years ago in the Netherlands; the group consists of a worldwide network of production and distribution companies. Group companies are involved in the development and distribution of industrial pumps, pumping systems, high-tech equipment for quality control, research and development into solid material (solids sample preparation and analytical technologies). The Verder Group employs over 1600 people and has an annual turnover in excess of 380 million Euros.



VERDER GmbH Austria

Since more than 25 years, Verder Austria is a well known and reliable partner for pumps in a wide range of applications. Each of our pumps is characterized by exceptionally high reliability and safety, even if dangerous, toxic or explosive media must be handled. We are constantly working to improve our products, to be even more versatile in the future. Excellent customer service, reliable top quality pumps, comprehensive and competent consulting and professional solutions are our first priorities.

Slovenia, Croatia, Bosnia and Herzegovina

2014 was a very important year. Since that time, Verder Austria extended its competence to Slovenia, Croatia and Bosnia-Herzegovina. Due to the excellent quality of the products, the highly trained pump experts and the solution oriented support, the market entrance has been quick and with big success.

VERDERFLEX PERISTALTIC PUMPS



Verderflex VF

Max. flow rate	90 m³/h
Max. operating pressure	16 bar
Max. suction height	9,5 m.w.c.
Max. temperature	100°C
Max. solid particles pumping	31,25 mm
Max. viscosity	47.000 mPas



Verderflex Dura

Max. flow rate	15 m³/h
Max. operating pressure	16 bar
Max. suction height	9,5 m.w.c.
Max. temperature	100°C
Max. solid particles pumping	13,75 mm
Max. viscosity	15.000 mPas



Verderflex ROLLIT

	Hygienic	Normal
Max. flow rate	7 m³/h	24,5 m³/h
Max. operating pressure	2 bar	4 bar
Max. suction height	7 m.w.c	7 m.w.c
Max. temperature	95°C	80°C
Max. solid particles pumping	13 mm	12,5 mm
Max. viscosity	35.000 mPas	35.000 mPas



Verderflex Rapide

Max. flow rate	17 l/min
Max. operating pressure	2 bar
Max. suction height	8 m.w.c.
Max. viscosity	1.000 mPas

Verderflex Vantage

Max. flow rate	6,6 l/min
Max. operating pressure	7 bar
Max. suction height	8 m.w.c.
Max. viscosity	1.000 mPas



Verderflex OEM

Max. flow rate	3,4 l/min
Max. operating pressure	2 bar
Max. suction height	8 m.w.c.
Max. temperature	85°C
Max. viscosity	1.000 mPas



Verderflex VP Peristaltic dosing pumps

Max. flow rate	6 l/h (230 V)
Max. flow rate	30 l/h (24 VDC)
Max. operating pressure	4 bar
Max. RPM	40
Protection class	IP 55
Max. temperature	65°C
Tubing	Santoprene, Silikon



Verderdos VE Solenoid dosing pumps

Max. flow rate	24 l/h
Max. operating pressure	18 bar
Protection class	IP 65
Max. temperature	65°C



VERDERAIR AIR OPERATED DOUBLE DIAPHRAGM PUMPS



Verderair VA

Max. flow rate	1.200 l/min	Max. operating pressure	8,6 bar
Max. flow rate	9,5 m.w.c.	Max. temperature	104°C
Max. solid particles pumping	13 mm	Max. viscosity	25.000 mPas



Verderair PURE

Max. flow rate	660 l/min	Max. operating pressure	7 bar
Max. flow rate	9,5 m.w.c.	Max. temperature	120°C
Max. solid particles pumping	11 mm	Max. viscosity	25.000 mPas



Verderair CONT-EX

Max. flow rate	130 l/min	Max. operating pressure	7 bar
Max. flow rate	4 m.w.c.	Max. temperature	70°C
Max. solid particles pumping	4 mm	Max. viscosity	25.000 mPas



Verderair HI-CLEAN

Max. flow rate	606 l/min	Max. operating pressure	8 bar
Max. flow rate	9,5 m.w.c.	Max. temperature	135°C
Max. solid particles pumping	63,5 mm	Max. viscosity	25.000 mPas



Verderair EODD

Max. flow rate	540 l/min	Max. operating pressure	7 bar
Max. flow rate	5,5 m.w.c.	Max. temperature	104°C
Max. solid particles pumping	6,3 mm	Max. viscosity	20.000 mPas

PACKO STAINLESS STEEL CENTRIFUGAL PUMPS

Industrial pumps

Max. flow rate	1.250 m ³ /h
Max. differential head	160 m.w.c.
Materials	Stainless steel 316L, e-polished
Certificates	1935/2004, ATEX, MEI 547/2012



Food pumps

Max. flow rate	1.250 m ³ /h
Max. differential head	160 m.w.c.
Materials	Edelstahl 316L, E-polierd
Certificates	1935/2004, ATEX, FDA, EHEDG,3A



Pharmaceutical pumps

Max. flow rate	90 m ³ /h
Max. differential head	120 m.w.c.
Materials	Stainless steel 316L, e-polished
Certificates	1935/2004, FDA, EHEDG, 3A, USP-Class VI



High shear pumps

Max. flow rate	200 m ³ /h
Max. differential head	50 m.w.c.
Materials	Stainless steel 316L, e-polished
Certificates	1935/2004, ATEX, FDA, USP-Class VI



**JEC ROTARY LOBE, CIRCUMFERENTIAL
PISTON AND TWIN-SCREW PUMPS**



JRZL Rotary lobe pumps

<i>Max. flow rate</i>	200 m ³ /h
<i>Max. operating pressure</i>	20 bar
<i>Max. temperature</i>	180°C
<i>Max. viscosity</i>	1.000.000 mPas



JRZP Circumferential piston pumps

<i>Max. flow rate</i>	42,5 m ³ /h
<i>Max. operating pressure</i>	15 bar
<i>Max. temperature</i>	180°C
<i>Max. viscosity</i>	1.000.000 mPas



JRZS Twin-screw pumps

<i>Max. flow rate</i>	100 m ³ /h
<i>Max. operating pressure</i>	12 bar
<i>Max. temperature</i>	150°C
<i>Max. viscosity</i>	1.000.000 mPas



JTP Rotary lobe truck pumps

Max. flow rate	49 m ³ /h
Max. operating pressure	15 bar
Max. temperature	150°C
Max. viscosity	100.000 mPas



JRZW Rotary lobe wine pumps

Max. flow rate	51 m ³ /h
Max. operating pressure	6 bar
Max. temperature	120°C
Max. viscosity	100.000 mPas



JEC JRZL500-Series Cheese curd pumps

Max. flow rate	330 m ³ /h
Max. operating pressure	4 bar
Max. temperature	120°C
Max. viscosity	1.000.000 mPas



VERDERMAG MAG DRIVE CENTRIFUGAL PUMPS



Verdermag V-MD

Max. flow rate	6 m ³ /h
Max. suction height	20 m.w.c.
Max. temperature	70°C



Verdermag GPMD, GLMD & GPSP

Max. flow rate	90 m ³ /h
Max. suction height	40 m.w.c.
Max. temperature	90°C



Verdermag TB & U

Max. flow rate	300 m ³ /h
Max. suction height	110 m.w.c.
Max. temperature	120°C
Max. solid particles pumping	3,2 mm



Verdermag Global

Max. flow rate	200 m ³ /h
Max. operating pressure	200 bar
Max. differential head	110 m.w.c.
Max. temperature	205°C



Verdermag S-series

Max. flow rate	1.200 m ³ /h
Max. operating pressure	6 bar
Max. differential head	7,5 m.w.c.
Max. temperature	180°C
Max. solid particles pumping	75 mm
Max. viscosity	50 mPas

VERDERGEAR GEAR PUMPS

Verdergear Small

Max. flow rate	2.880 l/h
Max. operating pressure	17 bar
Max. viscosity	2.000 mPas



Verdergear Process

Max. flow rate	110 l/min
Max. operating pressure	24 bar
Max. viscosity	100.000 mPas



Verdergear R Series

Max. flow rate	350 m³/h
Max. operating pressure	16 bar
Max. temperature	300°C
Max. viscosity	100.000 mPas



VERDERBAR PISTON DIAPHRAGM PUMPS



Verderbar G-Series

<i>Max. flow rate</i>	127 l/min
<i>Max. operating pressure</i>	172 bar



Verderbar T-Series

<i>Max. flow rate</i>	366 l/min
<i>Max. operating pressure</i>	345 bar



Verderbar Q-Series

<i>Max. flow rate</i>	595 l/min
<i>Max. operating pressure</i>	241 bar



Verderbar P-Series

<i>Max. flow rate</i>	44 l/min
<i>Max. operating pressure</i>	172 bar



Verderbar MT-Series

<i>Max. flow rate</i>	30,28 l/h
<i>Max. operating pressure</i>	241 bar

ANDERE PUMPS AND PRODUCTS

Verderhus Screw centrifugal pumps

Max. flow rate	1.500 m ³ /h
Max. operating pressure	55 m.w.c.
Max. temperature	90°C
Max. solid particles pumping	160 mm
Max. viscosity	3.000 mPas



Verderpro Progressing cavity pumps

Max. flow rate	500 m ³ /h
Max. operating pressure	48 bar



Verdermix Static mixers VMV, VML & VMS

Max. flow rate	350 m ³ /h
Max. operating pressure	16 bar
Max. temperature	300°C
Max. viscosity	100.000 mPas



Pulsation dampeners

Connections	1/4"-4"
Max. operating pressure	276 bar
Materials	PP, PE, PTFE (auch leitfähig), PVDF Aluminium, Edelstahl, Hastelloy C
Max. temperature	204°C



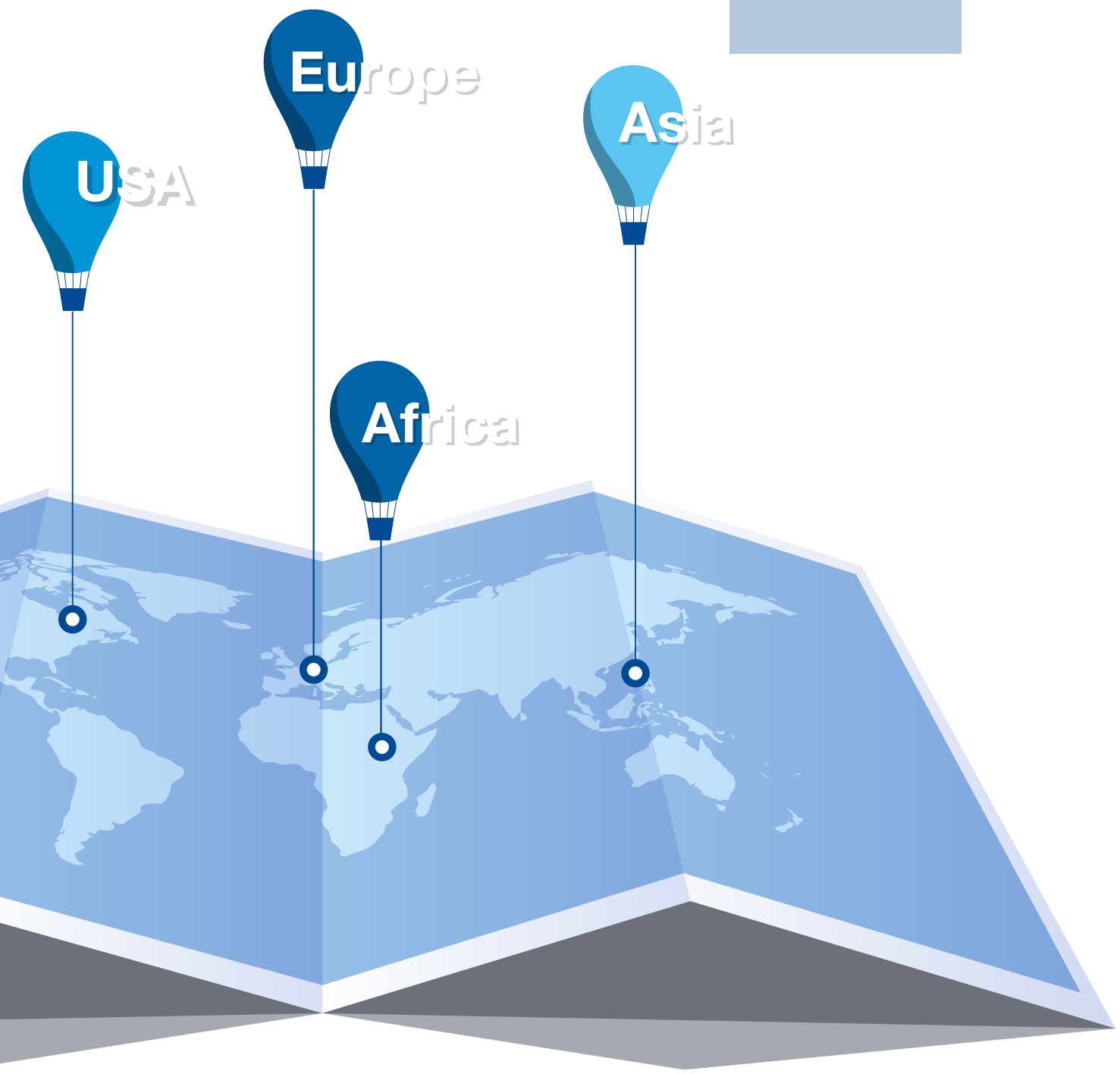


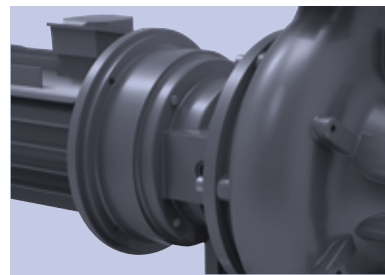
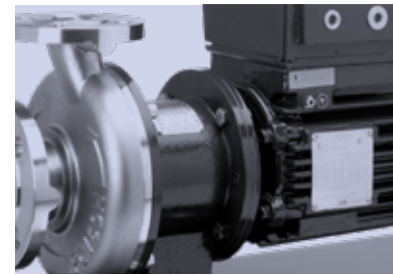
VERDER OFFICES

AUSTRIA / VIENNA
BELGIUM / AARTSELAAR
BULGARIA / SOFIA
SWITZERLAND / BASEL
CHINA / SHANGHAI
CZECH REPUBLIC / PRAHA
GERMANY / HAAN
FRANCE / ERAGNY S/OISE
UNITED KINGDOM / CASTLEFORD
HUNGARY / BUDAPEST
JAPAN / TOKYO
CROATIA / VIENNA (AUSTRIA)
INDIA / PUNE
NETHERLANDS / GRONINGEN/VLEUTEN
POLAND / KATOWICE
ROMANIA / BUCHAREST/SIBIU
SLOVENIA / VIENNA (AUSTRIA)
SLOVAKIA / BRATISLAVA
THAILAND / BANGKOK
USA / MACON (GA)
SOUTH AFRICA / NORTH RIDING
SOUTH KOREA / HWASEONG



VERDER





Any questions? Visit our website
www.verderliquids.com or call on
 tel.: +43 1 865 1074-0



VERDER GmbH AUSTRIA

Eitnergasse 21
 A-1230 Wien
 Austria

TEL +43 1 865 10 74-0
MAIL office@verder.at
WEB www.verderliquids.com

**AUSTRIA / BELGIUM / BULGARIA / CHINA / CROATIA / CZECH REPUBLIC
 FRANCE / GERMANY / HUNGARY / INDIA / ITALY / JAPAN / THE NETHERLANDS
 POLAND / ROMANIA / SERBIA / SLOVAKIA / SLOVENIA / SOUTH AFRICA
 SOUTH KOREA / SWITZERLAND / THAILAND / UNITED KINGDOM / USA**