

# Verderflex

## Rapide R3



VERDERFLEX®

Verderflex Rapide R3 Specifications	
Standard Speeds	84, 169 & 242 RPM
Control	Inverter Optional
Rotor Assembly	Anodised Aluminium with Two Nylatron® Rollers
Voltage	265/460V 60Hz (Single Phase Available to special order)
Installed Motor Power	¼ HP 60Hz
Protection Class	IP55
Standard Tube Options	Verderprene, Silicone
Tube Size	1/4" x 1/8", 5/16" x 1/8", 3/8" x 1/8" (6.4 x 3.2 mm, 8.0 x 3.2 mm, 9.6 x 3.2 mm)
Weight	11 lbs

### Flow Rates

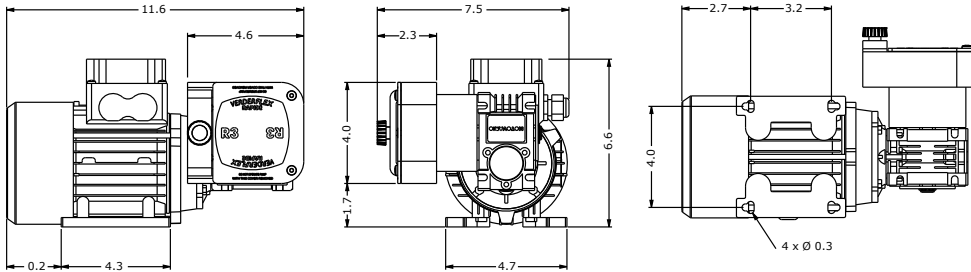
Tube	RPM	Flow GPH	Flow GPM	Flow ml/min	Flow l/h
1/4" x 1/8"	84	9.8	0.16	617	37
1/4" x 1/8"	169	19.5	0.33	1.233	74
1/4" x 1/8"	242	27.7	0.46	1.747	104.8
1/4" x 1/8"	*333	39.1	0.65	2.467	148
5/16" x 1/8"	84	15.6	0.26	987	59.2
5/16" x 1/8"	169	30.6	0.51	1.932	115.9
5/16" x 1/8"	242	43.6	0.73	2.753	165.2
5/16" x 1/8"	*333	61.9	1.03	3.905	234.3
3/8" x 1/8"	84	18.9	0.32	1.192	71.5
3/8" x 1/8"	169	37.1	0.62	2.342	140.5
3/8" x 1/8"	242	53.1	0.89	3.350	201
3/8" x 1/8"	*333	74.9	1.25	4.727	283.6

Nominal pump speed based on 60Hz operation  
\*333 RPM is a non-standard speed

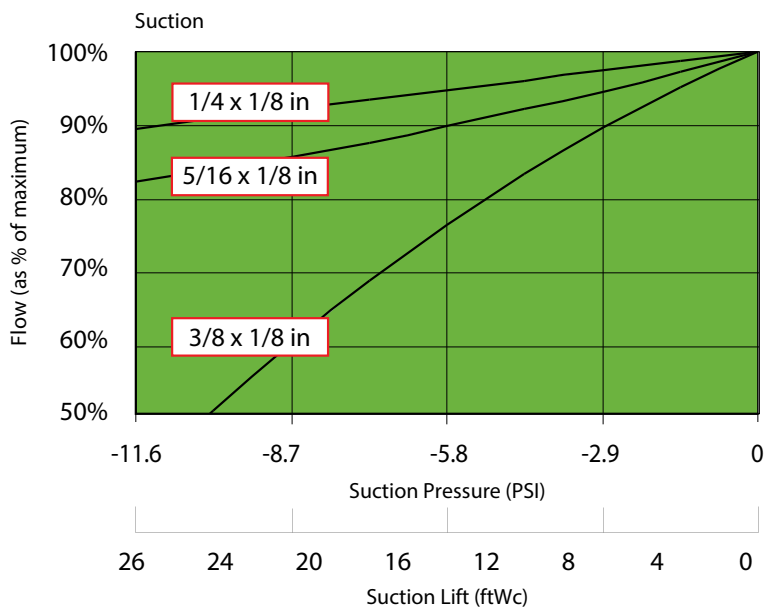
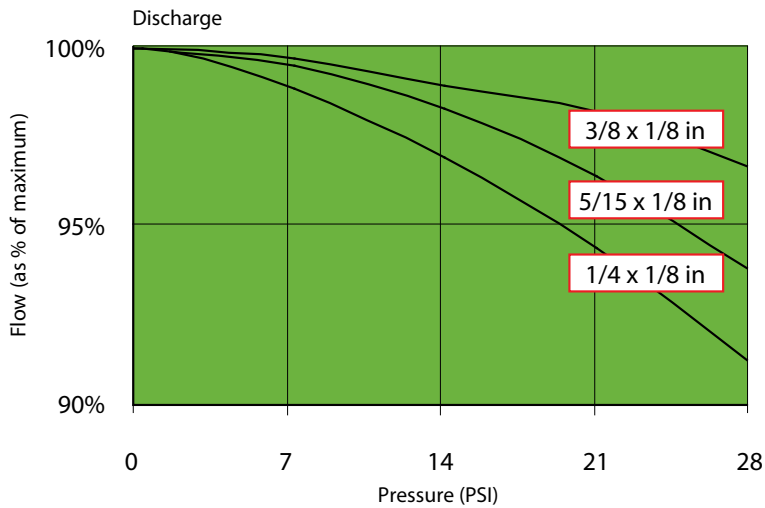
Flows are typical and were measured with water at 68°F with no suction lift or discharge pressure. Actual flows will vary according to suction conditions, discharge pressure, tube material and production tolerances.



# Verderflex Rapide R3



All dimensions are in inches.  
All dimensions and weights are for guidance only.



VF\_Techno\_Rev01\_2013\_(us)\_Rapide

Find your local supplier  
at [www.verderflex.com](http://www.verderflex.com)

For construction installation and floor mounting drawings  
please contact your local authorised Verderflex® distributor.

**VERDER**  
passion for pumps