

Verderflex

Rapide R12



VERDERFLEX®

Verderflex Rapide R12 Specifications

| | |
|-----------------------|---|
| Standard Speeds | 115 & 173 RPM |
| Control | Inverter Optional |
| Rotor Assembly | Anodised Aluminium with Three Nylatron® Rollers |
| Voltage | 265/460V 60Hz (Single Phase Available to special order) |
| Installed Motor Power | ¼ HP 60Hz |
| Protection Class | IP55 |
| Standard Tube Options | Verderprene, Silicone |
| Tube Size | 5/8" x 3/16" (15.9 x 4.8 mm) |
| Weight | 26.5 lbs |

Flow Rates

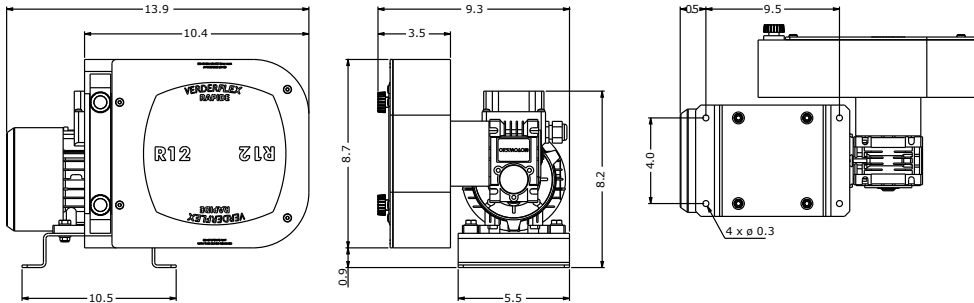
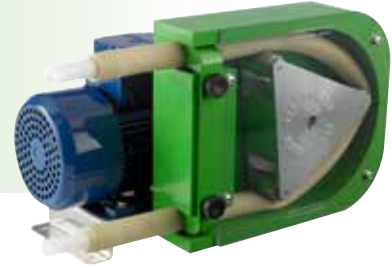
| Tube | RPM | Flow GPH | Flow GPM | Flow ml/min | Flow l/h |
|--------------|-----|----------|----------|-------------|----------|
| 5/8" x 3/16" | 69* | 109.5 | 1.83 | 6.910 | 414.6 |
| 5/8" x 3/16" | 86* | 136.7 | 2.28 | 8.630 | 517.8 |
| 5/8" x 3/16" | 115 | 181.7 | 3.03 | 11.470 | 688.2 |
| 5/8" x 3/16" | 173 | 273.4 | 4.56 | 17.260 | 1035.6 |

Nominal pump speed based on 60Hz operation
*69 and 86 RPM are a non-standard speed

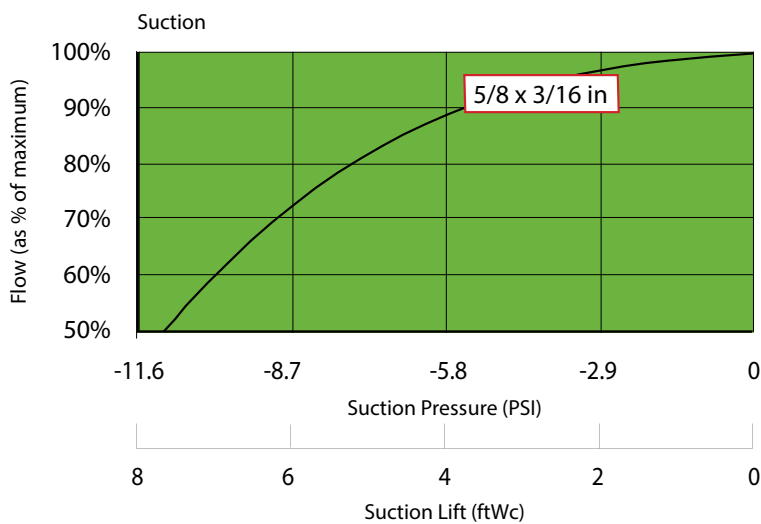
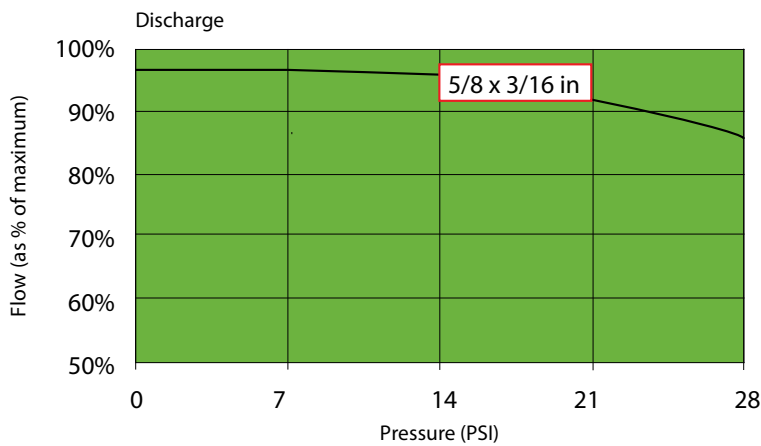
Flows are typical and were measured with water at 68°F with no suction lift or discharge pressure. Actual flows will vary according to suction conditions, discharge pressure, tube material and production tolerances.



Verderflex Rapide R12



All dimensions are in inches.
All dimensions and weights are for guidance only.



Find your local supplier
at www.verderflex.com

For construction installation and floor mounting drawings
please contact your local authorised Verderflex® distributor.

VERDER
passion for pumps