



VERDERFLEX®



### VERDERFLEX OEM

**Any questions?** You may still have questions and/or comments after reading this brochure. Please feel free to contact us on +44 (0)1924 221 020 You can also respond via email to [info@verderflex.com](mailto:info@verderflex.com). For more information about Verderflex please visit our website [www.verderflex.com](http://www.verderflex.com)

### S30 Three Roller Pumps

VERDERFLEX®



**VERDERFLEX**

Unit 3, California Drive, **TEL** +44 (0)1924 221 020  
Castleford WF10 5QH **FAX** +44 (0)113 222 0291  
United Kingdom **MAIL** [info@verderflex.com](mailto:info@verderflex.com)  
**WEB** [www.verderflex.com](http://www.verderflex.com)

**AT** Wien **BE** Aartselaar **BG** Sofia **CH** Basel **CN** Shanghai **CZ** Praha **DE** Haan  
**FR** Eragny s/Oise **GB** Castleford **HU** Budapest **IT** Torre Boldone  
**JP** Tokyo **NL** Groningen/Vleuten **PL** Katowice **RO** Bucuresti/Sibiu  
**RU** St Petersburg **SK** Bratislava **US** Newtown/Macon **ZA** Northriding

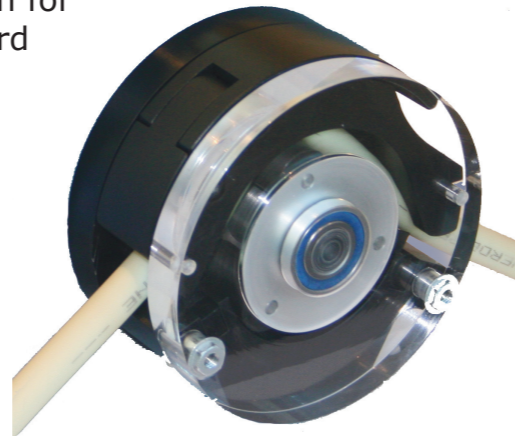
S303.EN.1.111



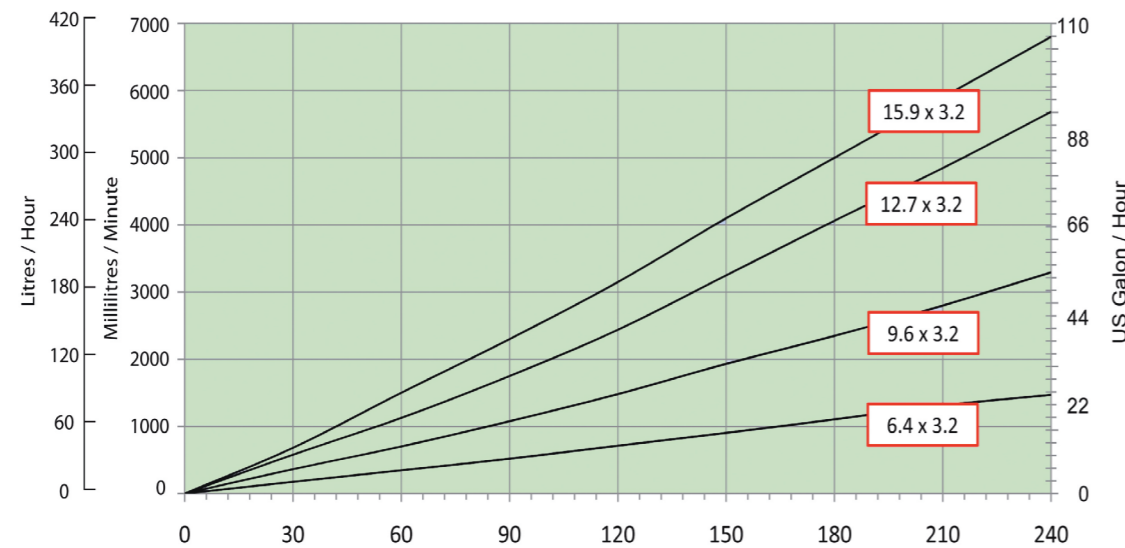
# S30 - 3 roller

The S30 pump head design features a quick tube change, ergonomic design for ease of use and accepts four standard tube sizes.

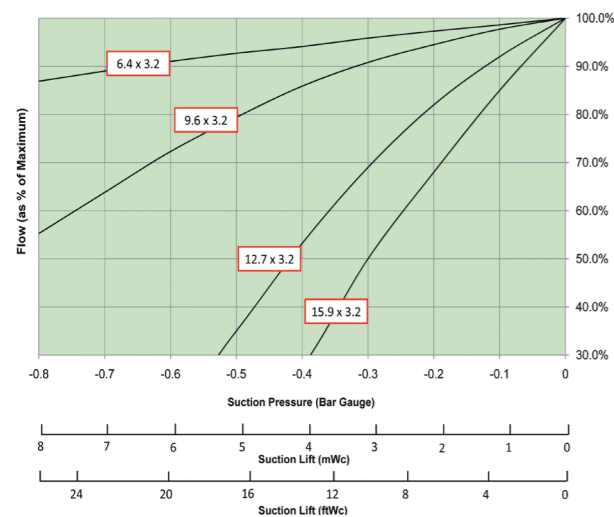
- Flow rates up to 6.9 l/min (109.4 US GPH)
- Pressures up to 2 Bar (29 PSI)
- Typically used in:
  - Chemical dosing,
  - Industrial fluid transfer,
  - Heavy duty environments



S30 - 3 Roller Free Flow Curve

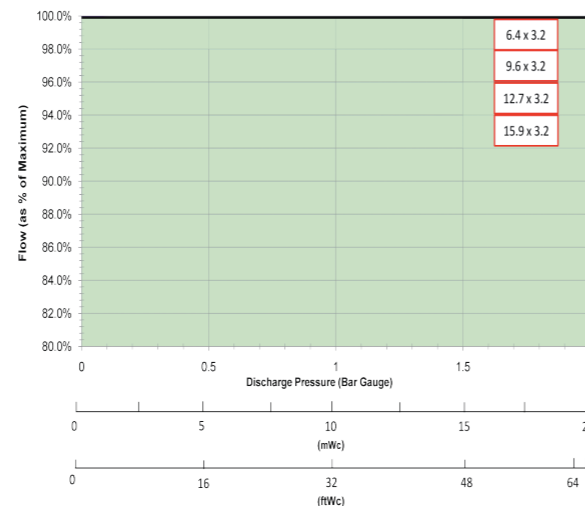


Suction



Flow rates with water at 20 °C (68 °F)

Discharge



## Technical Overview

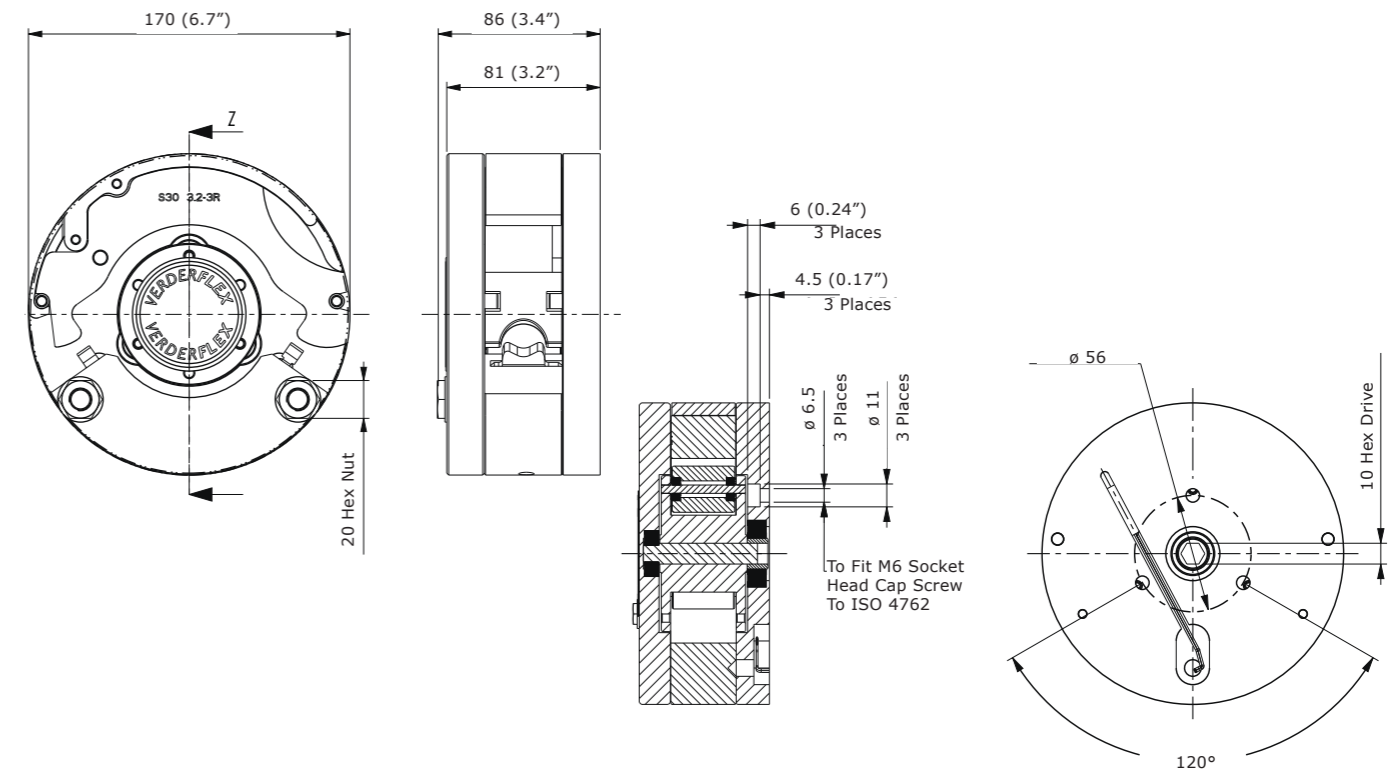
### Pump Specifications

Easy-fit tube saddle for rapid tube changes	BS EN 1474 6082 TF Aluminium Alloy construction
Fits a range of tube sizes and materials	Stainless Steel rotor shaft
Simple adjustable tube clamping system	Polyoxymethylene (POM) clamp-base
Fits a variety of pump enclosures	Polymethylmethacrylate (PMMA) clear cover
Multi-channel capability	316 Stainless Steel Rollers
Working Temperature	5 - 45°C or 41 - 113°F (T <sub>A</sub> = +20°C or 68°F)
Tube	Verderprene, Silicone, Viton® and Tygon®
Tube Sizes	6.4 x 3.2mm, 9.6 x 3.2mm, 12.7 x 3.2mm, 15.9 x 3.2mm
Weight	2.7kg

### Tube Size Options

Tube (ID x WT)	60 RPM	120 RPM	180 RPM	240 RPM
6.4 x 3.2 mm (1/4" x 1/8")	0.3 l/min 18 l/hr 4.8 GPH	0.7 42 11	1.1 66 17.5	1.5 90 23.8
9.6 x 3.2 mm (3/8" x 1/8")	0.5 l/min 45 l/hr 11.89 GPH	1.5 90 23.8	2.4 144 38.0	3.2 192 50.7
12.7 x 3.2 mm (1/2" x 1/8")	1.1 l/min 66 l/hr 17.4 GPH	2.5 147 38.8	4.1 246 65.0	5.7 342 90.3
15.9 x 3.2 mm (5/8" x 1/8")	1.5 l/min 90 l/hr 23.8 GPH	3.1 186 49.1	5.0 300 79.3	6.9 414 109.4

## General Arrangement Drawing and Mounting Positions



All dimensions in millimetres and inches