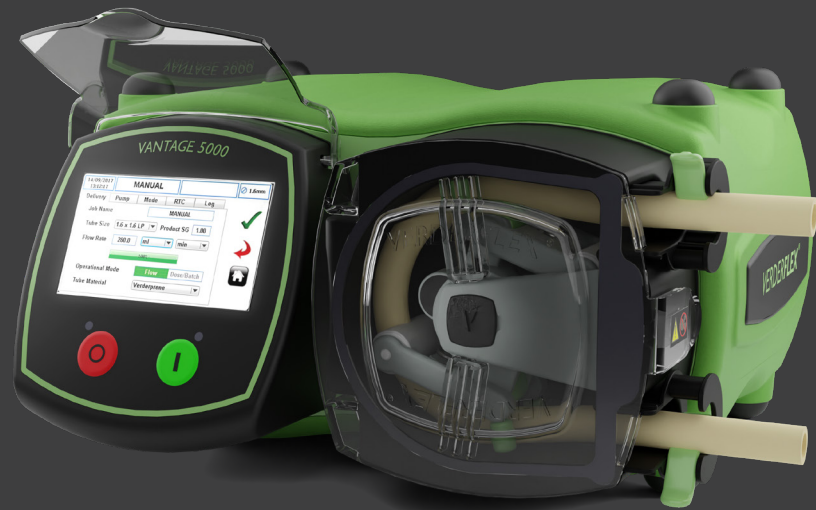


PRECISION DOSING PUMPS

# VANTAGE 5000

The pinnacle of  
precision batch dosing



The Verderflex Vantage 5000 is designed with state-of-the-art technology for precision dosing and ease of use. Its intuitive programming for batch dosing, simple maintenance, and long-life tube materials streamline production and minimise downtime. The Vantage 5000 is ideal for facilities seeking pinpoint dosing accuracy and offers the benefits of a low-shear, a gentle pump to optimise operations and improve product quality.

### Flexible choice of tubing

There are two new additions to the Vantage 5000's standard tube set. The new Verderhygienic tube is designed to endure temperatures ranging from -80°C to 135°C and is ideal for peristaltic pumps often used in dispensing machinery. The inner lining of the new Verderchem tube has significantly increased chemical resistance and provides a wide range of applications. All four tube materials each have their own benefits.

#### Verderprene tubes

For water treatment applications

- Long-life tubing
- Chemically compatible with many media
- Excellent mechanical strength

#### Verderhygienic tubes

For the food and beverage industry

- Taste and odour free
- Perfect for food and beverage dispensing
- Compatible with milk based products

#### Silicone tubes

For medical and pharmaceutical applications

- Great temperature resistance
- Translucent for sensitive applications
- Non-yellowing, dry surface

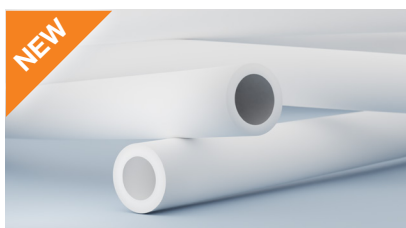
#### Verderchem tubes

For acid dosing

- Superior chemical resistance
- Suitable for acid dosing associated with lithium leaching
- Plasticiser-free bore

### Key features:

- ✓ Easy precision dosing
- ✓ Maximum flow range flexibility
- ✓ Icon based programming on touch screen
- ✓ Import jobs to 2nd pumps to eliminate intra-pump variations
- ✓ Download operational history for data driven insights





## Why the Vantage 5000 is the right choice for batch dosing?

### 1. Precision:

The Vantage 5000 ensures that every drop is accurately dosed, for every batch again, and again resulting in accurately dispensed products. Users can dispense multiple single shots, eliminate costly overdosing and the waste of any product.

### 2. Streamlined Efficiency:

Get more done in less time. The intuitive interface and smart automation of the Vantage 5000 streamline batch dosing workflow, reducing downtime and maximizing productivity.

### 3. Adaptive Technology:

The Vantage 5000 is versatile and can handle various liquids for industrial and FDA use. The SCADA option is compatible and seamlessly interface with Modbus, Profibus, or standard 4-20mA. The adaptive technology adjusts dosing settings for different substances, eliminating the need for constant adjustments.

### 4. Data-Driven Insights:

The Vantage 5000 offers integrated analytics, a 1GB memory, and real-time insights into dosing performance, event logging, and user interaction. Its touch screen displays confirmation and alerts to prevent downtime, while the data-driven approach supports informed decision-making for optimal production efficiency.

### 5. User-Friendly:

Users don't need to be technical experts to take advantage of the power of the Vantage 5000. The user-friendly touch screen interface makes operation simple, so your team can master precision dosing in no time. Furthermore, the tubes and rotors can be changed easily and quickly without dismantling the pump.

### 6. Reliability and Durability:

The Vantage 5000 is built with durability in mind, ensuring consistent performance even in demanding IP 66 / NEMA 4X environments. It eliminates cross contamination risks and dry running damage. Rely on a system that's designed to be your long-term partner in success.

### Pump head options

The Vantage 5000 offers a variety of pump head options to provide seamless and accurate liquid transfer at pressures up to 7 bar. Its four interchangeable rotors allow users to adjust the tube wall thickness and delivery pressure to meet their unique requirements. These pump head options are user-friendly and can be quickly changed.

