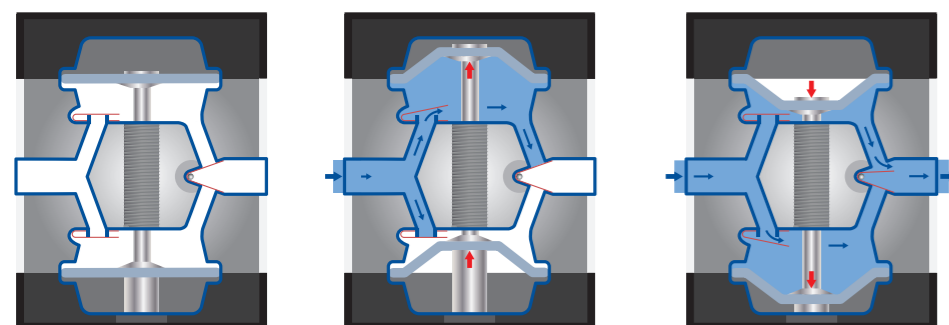




Horizontal fluid flow diaphragm pumps



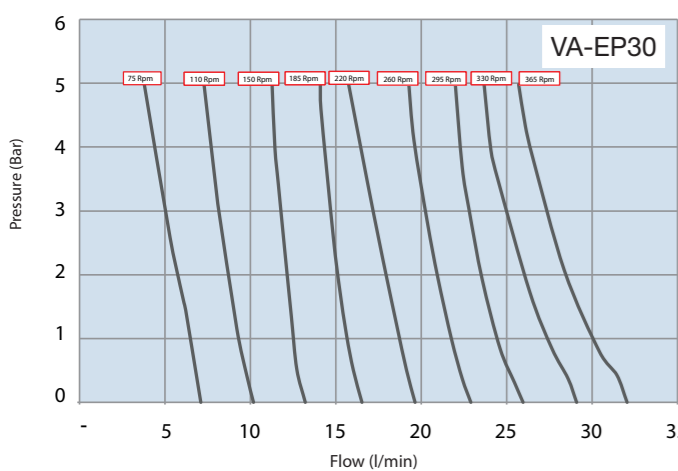
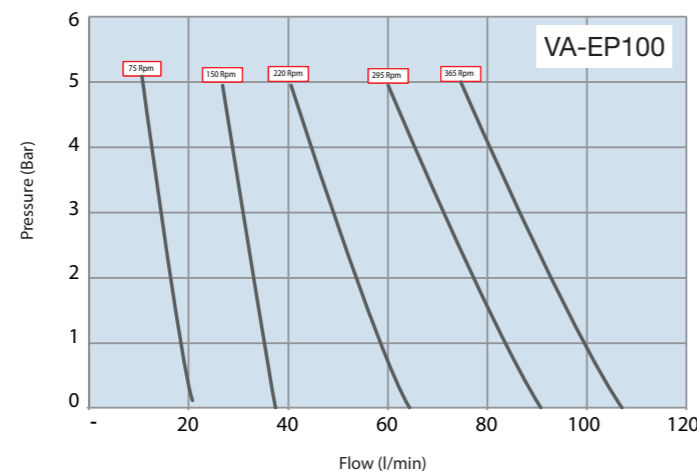
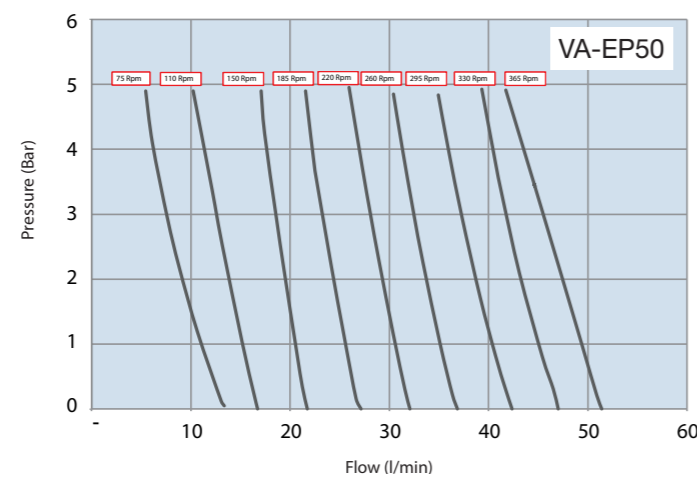
* Fluid flow view from above

In e-PURE diaphragm pumps the fluid moves through the pump horizontally. The electric drive ensures the reciprocating movement of the diaphragms so that the diaphragm chambers are alternately filled and pressed. This pump design utilises flapper valves instead of ball valves, a reduced number of flow bends and moving parts resulting in less friction losses. The speed of the fluid and the energy efficiency of these pumps is therefore optimal. The direct results are reduced maintenance, lower energy costs and a longer life time. High speed low stroke technology enables low pulsation.

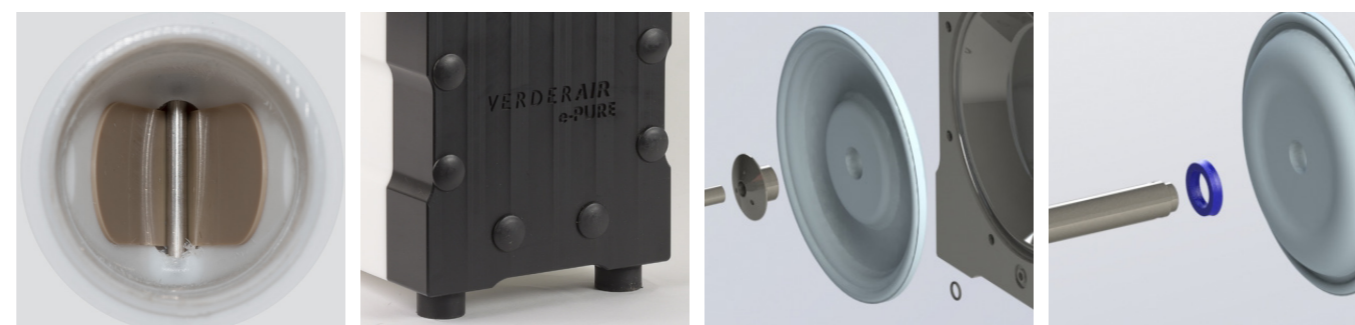
Flow ranges

Sustainability

- The horizontal fluid flow path results in less friction losses and an optimum fluid speed which increase the pump efficiency.
- Electrically driven (230V, 1ph) and no expensive compressed air is needed which results in lower energy consumption.
- Direct benefits of using this pump are less maintenance, less energy costs and a longer life time.



Highlights leak free design



- ✓ Flat valves produced from wear resistant PEEK
- ✓ Strong and solid pump construction
- ✓ Diaphragms fully PTFE sealed
- ✓ Chemical resistant sealing sleeve

Models and technical details



		VA-EP30	VA-EP50	VA-EP100
Max. flow (gpm)		7.9	13.2	26.4
Max. pressure (psi)		72	72	72
Max. temperature (°F)	PTFE	203	203	203
	PE	158	158	158
Max. particle size of solids (inch)		0.08	0.08	0.16
Connection NPT (inch)		3/4	3/4	1 1/4
Certifications*		Ex	Ex	Ex

* See datasheet for ATEX zone

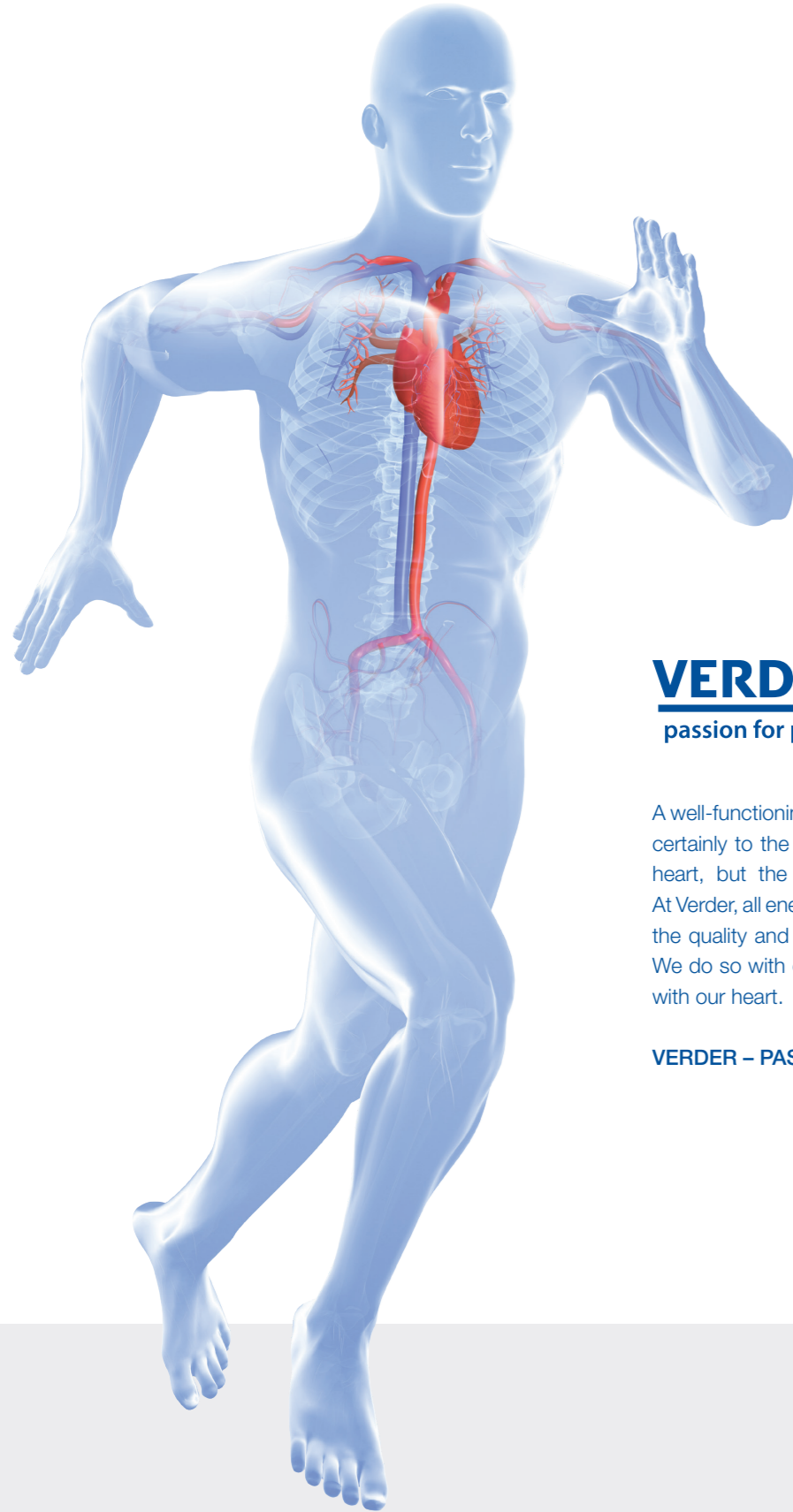
VERDERAIR e-PURE

Electrically driven double diaphragm pump



Benefits of the Verderair e-PURE

- ✓ Very energy efficient
- ✓ Plug and play
- ✓ Less maintenance - longer life time



VERDER
passion for pumps

A well-functioning pump helps you succeed. That applies certainly to the most important pump in life, the human heart, but the same goes for pumps in businesses. At Verder, all energy and attention is focused on improving the quality and performance of our pumps and service. We do so with energy, dedication and most importantly, with our heart.

VERDER – PASSION FOR PUMPS

Electrically driven double diaphragm pump

The Verderair e-PURE electrically driven double diaphragm pump uses a new kind of technology for diaphragm pumps. This pump series works according to a horizontal fluid flow path, which gives a more energy efficient and less friction loss fluid path. A direct result is reduced maintenance, lower energy costs and a longer life time. The pump housing is manufactured from solid machined PTFE or PE (UHMW). The other wetted parts are made from PEEK and SS 316L or Hastelloy C or Duplex SS. The e-PURE ensures a sustainable solution combined with diaphragm pump advantages.

Key features:

- Low energy consumption
- Leak free design
- Self priming & dry running
- Can handle abrasive liquids
- Low pulsation
- ATEX certified

Options:

- Frequency inverter
- Leak detection

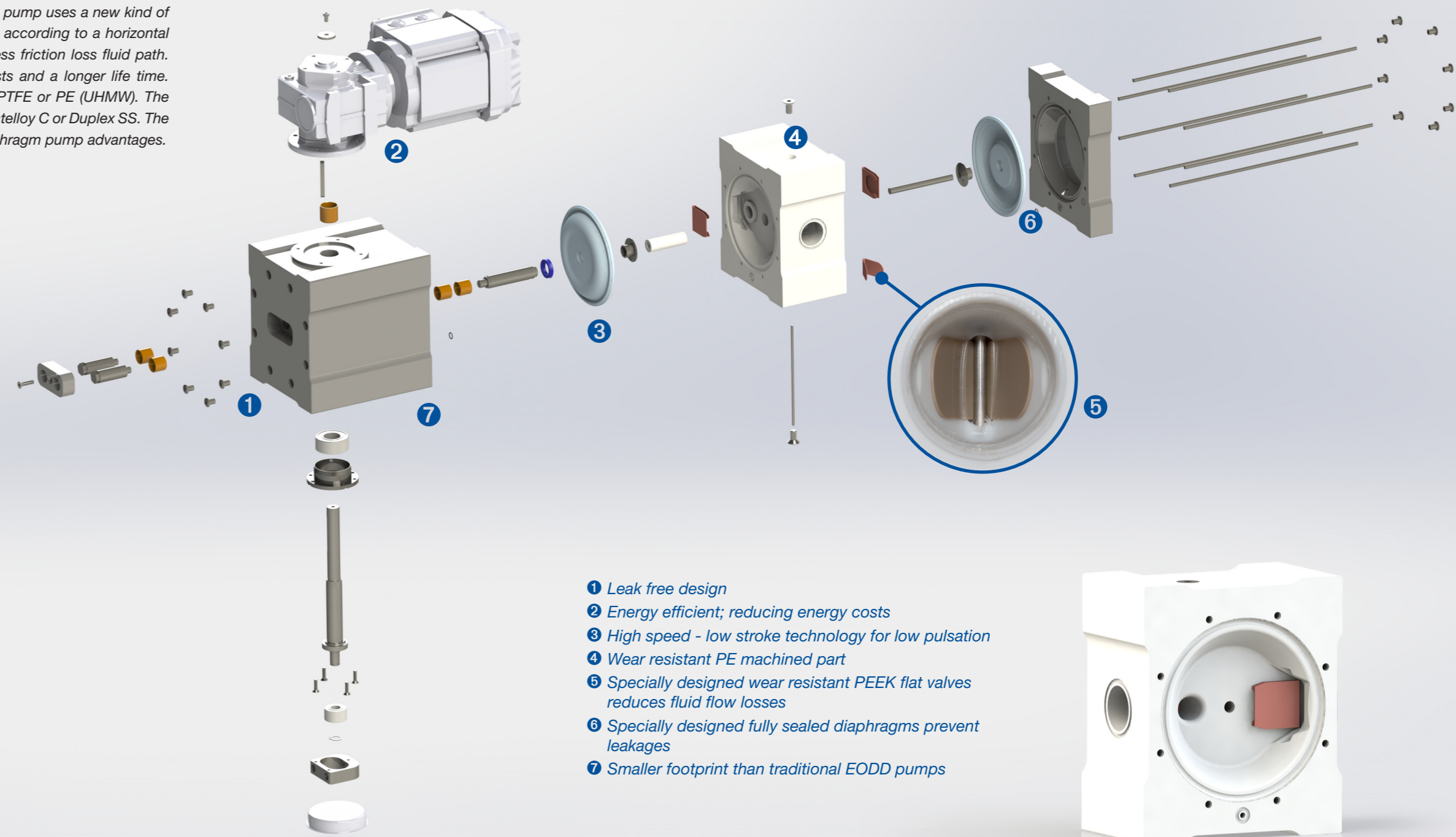
Application areas:

- Dosing or continuous flow
- Abrasive liquids

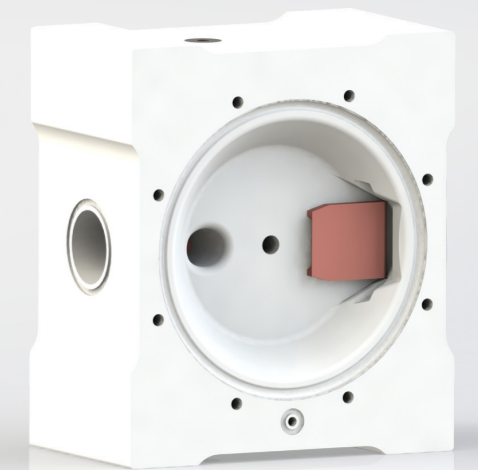


Frequency inverter:

- 220 Volt single phase
- Flow rate adjustable
- Soft start



- 1 Leak free design
- 2 Energy efficient; reducing energy costs
- 3 High speed - low stroke technology for low pulsation
- 4 Wear resistant PE machined part
- 5 Specially designed wear resistant PEEK flat valves reduces fluid flow losses
- 6 Specially designed fully sealed diaphragms prevent leakages
- 7 Smaller footprint than traditional EODD pumps



VERDEAIR[®]
e-PURE