

Verderair VA-H20 FD




VA-H20 FD

VERDERAIR


Technical data				
Weight [lb]	All models		23	
Suction lift [feet]	Dry		15	
	Wet		23	
Temperature [°F]	Internals	SP	40	180
		TF / TO	40	220
Max. Particle size [in]	3/32			
Max. Viscosity (cPs)	10000			
Certifications	Internals TF		EN1935/2004	
	All models		FDA	

Code VA-H20 No.1 No.2 No.3 No.4 No.5 No.6 No.7

no.1 Fluid section material

 S = 316 Stainless Steel, 125 Ra

No. 2 Air Section material

 P = FDA compliant Polypropylene

No. 3 Check Valve seat material

SE = SS seat with EPDM o-rings

ST = SS seat with PTFE o-rings


No. 4 Check valve ball material

SP = Santoprene

TF = PTFE

No. 5 Diaphragm material

SP = Santoprene

 TF = PTFE/EPDM 2 piece

TO = PTFE/EPDM overmolded

No. 6 Fluid connections

D2 = DIN 11851, DN25, male

T2 = Tri-Clamp (ASME BPE), 1"

No. 7 Pump Style

FD = Food grade design

EXAMPLE PUMP TYPE

VA-H20SP ST TF TO T2 FD

NOTE not all combinations are available



II 2 GD c IIA T4

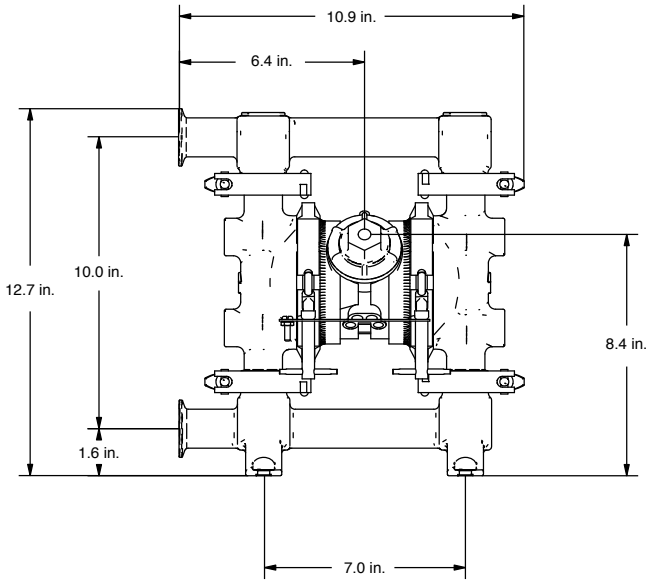


EN 1935/2004

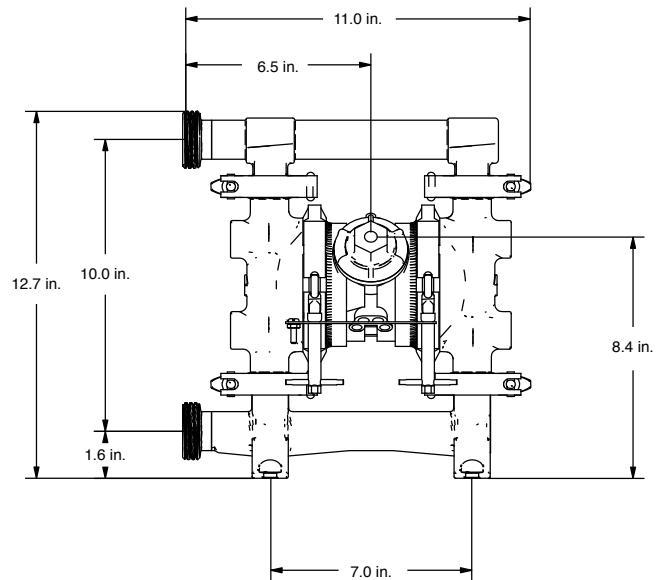


Verderair VA-H20 FD

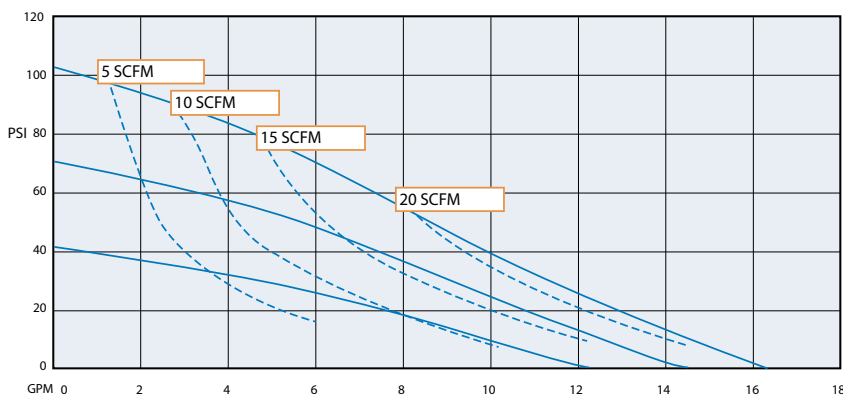
VA-H20 FD



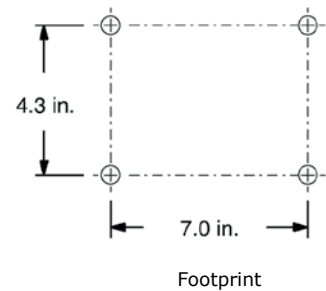
VA-H20_FD Tri-Clamp



VA-H20_FD Din



Air consumption



VA-H20_FD_Techno_Rev01-2014_US_(us)

Find your local supplier at www.verderair.com

