

Verderair

PD-P25



PD-P25



VERDERAIR

Technical data PD-P25

Nominal port size	PD-P25 xx xx TN	1" NPT male
	PD-P25 xx xx FS	Flanged DIN DN25, ANSI 1"
Air inlet		R 1/8"
Weight [kg]	PD-P25 EA xx TN	2
	PD-P25 EG xx TN	1,8
	PD-P25 TA xx TN	2,4
	PD-P25 TG xx TN	2,2
	PD-P25 GG xx TN	1,7
	PD-P25 UG xx TN	2,1
	PD-P25 EA xx FS	2,1
	PD-P25 EG xx FS	1,9
	PD-P25 TA xx FS	2,8
	PD-P25 TG xx FS	2,6
	PD-P25 GG xx FS	1,9
	PD-P25 UG xx FS	2,5
Max. operation pressure [Bar]		7
Max. operating temperature [°C]	PD-P25 EA or PD-P25 EG	70
	PD-P25 TA	120
	PD-P25 GG	70
	PD-P25 TG or PD-P25 UG	70

CODE PD-P25 No.1 No.2 No.3 No.4

No.1 Liquid Housing

- E = Polyethylene (PE UHMW)
-  G = Conductive Polyethylene (PE UHMW)
- T = PTFE
-  U = Conductive PTFE

no.2 Air Section

-  G = Conductive Polyethylene (PE UHMW)
- A = Polyamide

No.3 Diaphragm

- EO = EPDM Overmolded
- TO = PTFE Overmolded


No.4 Fluid Connection

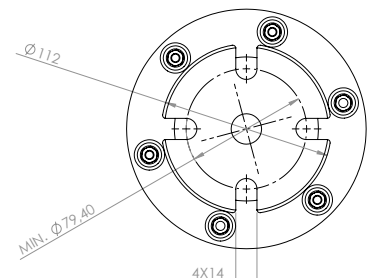
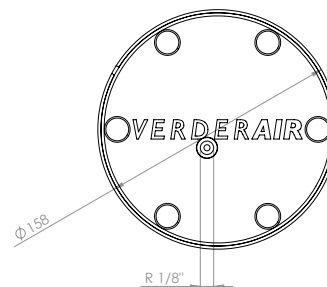
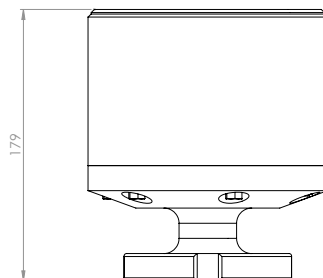
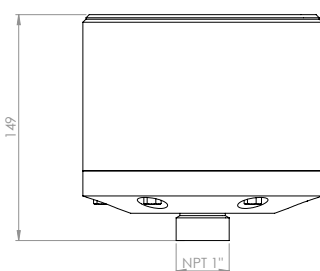
- TN = NPT Threaded male
- FS = Flanged slotted for DIN/ANSI/JIS

Note: Not all combinations are available

EXAMPLE PUMP TYPE

EXAMPLE : PD-P25EA EO TN

 II 2GD c II B T70



Dimensions in mm

PD-P25_Techno_Rev01-2013_UK_(eu)

Find your local supplier at www.verderair.com

VERDER
passion for pumps