

The pumps of the CRP series are perfectly cleanable EHEDG certified air handling pumps and are mainly used to pump a mixture of liquid and air. They are used in the most demanding hygienic applications in almost all industries such as dairies, breweries, beverage industry, distilleries, etc. These perfectly cleanable pumps have stainless steel 316L pump casings constructed in thick cold rolled plate, 100% non porous and extremely smooth. The pumps have open or closed investment cast impellers, constructed in 316L or duplex materials. Thanks to its crevice-free design and electropolishing as a final surface treatment, the CRP pump series are perfectly cleanable, resulting in a reliable component into your production process.

Application areas

Thanks to its unique air handling design based on a standard centrifugal pump, the CRP series are particularly suitable as a CIP return pump, as well as for unloading milk collecting trucks.

Your benefits

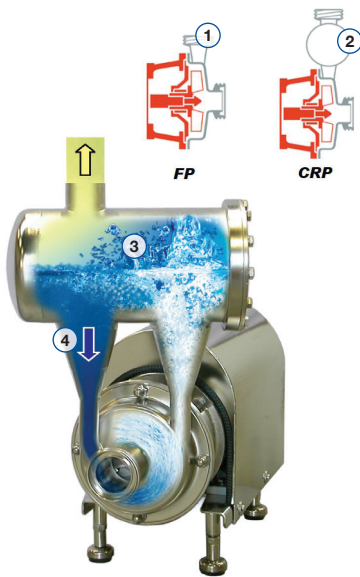
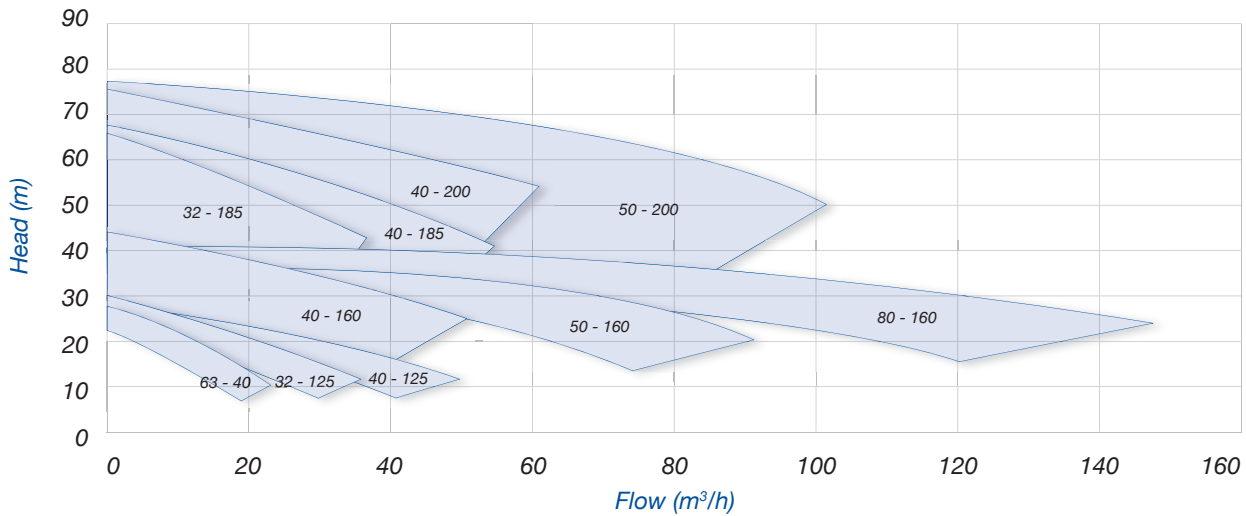
- Higher pump efficiency compared with a classic liquid ring pump
- Low NPSH values: less risk on cavitation
- Electropolished: perfectly cleanable
- Easy construction and easy maintenance: Less downtime
- Standard components
- Easy to install
- 2 mechanical seal diameters for the entire range
- Robust construction
- Limited noise level

Technical specifications

Max. flow rate	120 m³/h
Max. differential head	75 m
Max. liquid viscosity	10 cP (to guarantee air handling capabilities)
Max. temperature	140°C
Impeller type	Open or closed
Max. free passage	22 mm
Max. motor power	22 kW
Max. speed	3000 / 3600 rpm
Available frequency	50 / 60 Hz
Connections	Sanitary fittings
Materials wetted parts	Stainless steel 316L or similar
Available materials o-ring	EPDM, FKM, FEP-FKM, FFKM, Silicone
Mechanical seal configuration	Single, quench, double
Surface finish	Food quality, internal welds hand polish + electropolish (Casing 0.8 µm - Impeller 3.2 µm)
Certificates & Legislation	EHEDG, 1935/2004 EC, FDA, USP, ATEX

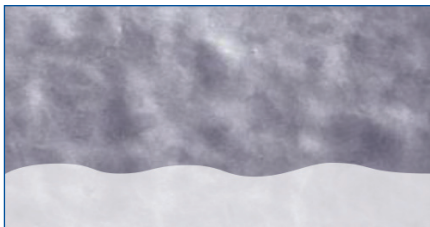


Performance curves at 2900 rpm

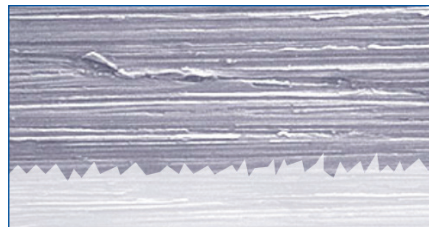


Specifications

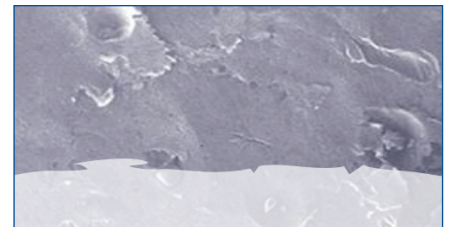
- All parts are interchangeable with EHEDG certified food pump series FP2 & FP3, the only difference is the pump casing (1 +2)
- Unique air handling design with cleanable air separator (3)
- By-pass to casing taking care about air evacuation (4)
- Standardized mechanical seals to EN 12756
- FDA approved bellows mechanical seals or sterile O-ring seals (spring not in contact with the liquid)
- 1 mechanical seal Ø 33 mm (only 80-160 has a 43 mm seal Ø)
- Electropolished design (for wetted & non-wetted parts); easy to clean and increased corrosion resistance



Electropolished



Mechanical polishing 240 grit



Glass bead blasted

Find your local supplier at www.verder-liquids.com

For construction, installation and floor mounting drawings please contact your local authorised Verder® distributor.

VERDER
passion for pumps