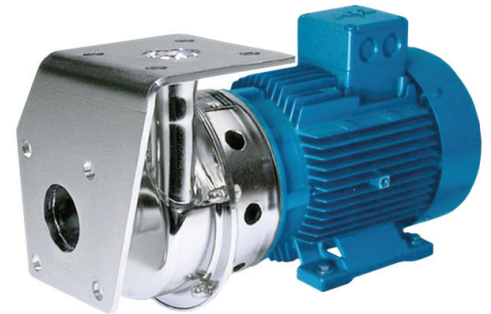


The competitive Packo industrial pump series NP60 are used as process pumps in almost all industries such as textile, water treatment, chemical, etc. These low cost pumps have stainless steel 316L pump casings constructed in cold rolled plate, 100% non porous and extremely smooth. The pumps have open investment cast impellers in 316L. Thanks to its electropolished surface treatment, the NP60 pump series is a reliable component into your production process.



Application areas

The NP pumps are mainly used for pure as well as slightly contaminated liquids up to a maximum viscosity of 500 cP. They are often used as process pump for the colouring of textiles, for water treatment, but also for pumping solvents, alcohols and chemicals.

Your benefits

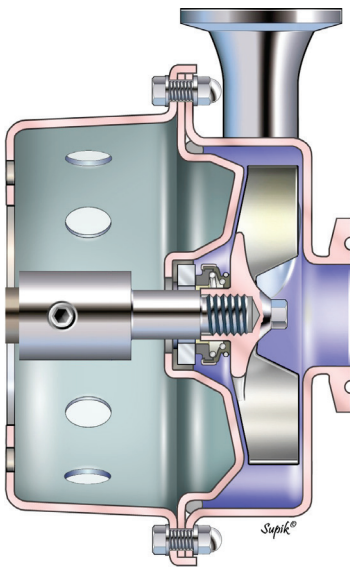
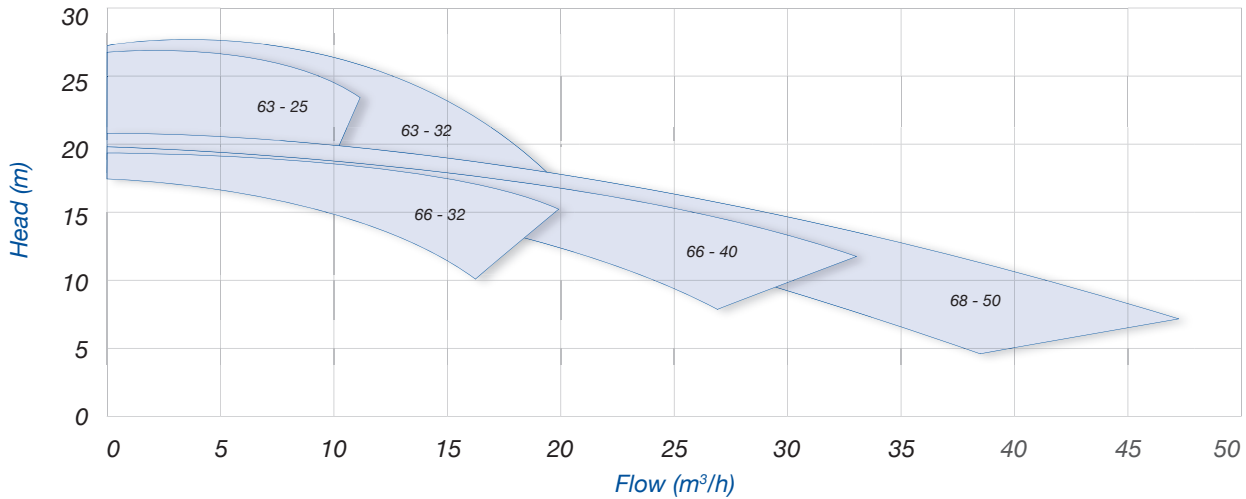
- High pump efficiency resulting in lower energy consumption
- Low NPSH values: less risk on cavitation
- Electropolished
- Easy construction and easy maintenance: Less downtime
- Standard components
- Easy to install
- Best value for price

Technical specifications

Max. flow rate	40 m ³ /h
Max. differential head	25 m
Max. liquid viscosity	500 cP
Max. temperature	140°C
Impeller type	Open
Max. free passage	15 mm
Max. motor power	2.2 kW
Max. speed	3000 / 3600 rpm
Available frequency	50 / 60 Hz
Connections	BSP thread, industrial flanges acc. to EN 1092-1/01
Materials wetted parts	Stainless steel 316L or similar
Available materials o-ring	EPDM, FKM
Mechanical seal configuration	Single, quench
Surface finish	Industrial finish: welds are not hand polished. Final surface treatment: electropolished
Certificates & Legislation	ATEX, EU N° 547/2012

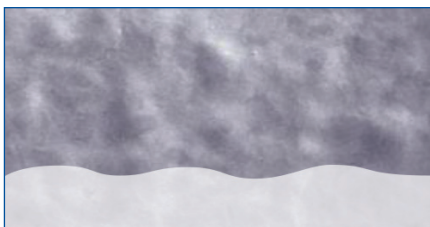


Performance curves at 2900 rpm

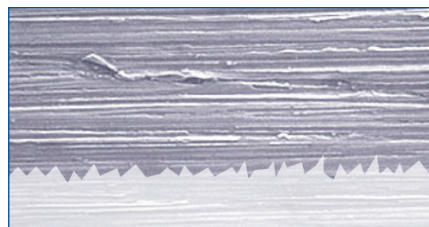


Specifications

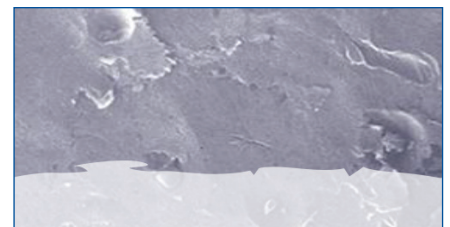
- Low cost industrial stainless steel centrifugal pump
- Use of standardized components
- Electropolished design (for wetted & non-wetted parts); easy to clean and increased corrosion resistance



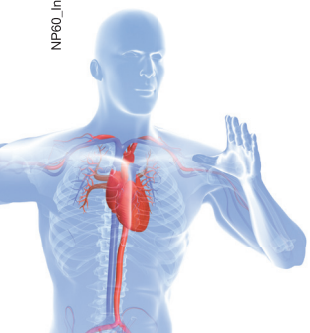
Electropolished



Mechanical polishing 240 grit



Glass bead blasted



Find your local supplier at www.verder-liquids.com

For construction, installation and floor mounting drawings
please contact your local authorised Verder® distributor.