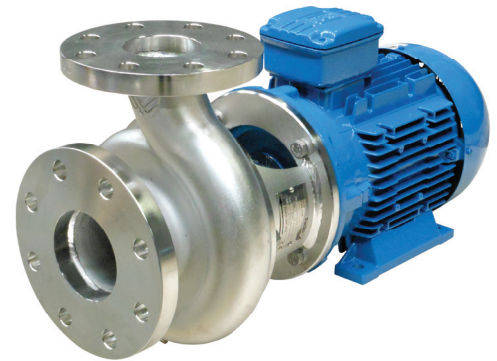


The Packo pumps of the MCP2 series are used in almost all industries such as vegetable industry, breweries, water treatment and textile industry as well as in e.g. biogas, biodiesel and bioethanol applications. These robust pumps have stainless steel 316L cast pump casings and open or semi-open investment cast impellers, constructed in 316L or duplex materials. Thanks to its solid construction and electro polished design these pumps are the reliable component for your production process.



Application areas

They are often used as process pump for contaminated water as well as for CIP cleaning systems, filtration of wine, mash, beer, whey and blanching of vegetables. Typical liquids: mash, wort, process and contaminated water, biodiesel, bioethanol, alcohols, CIP, biogas, etc.

Your benefits

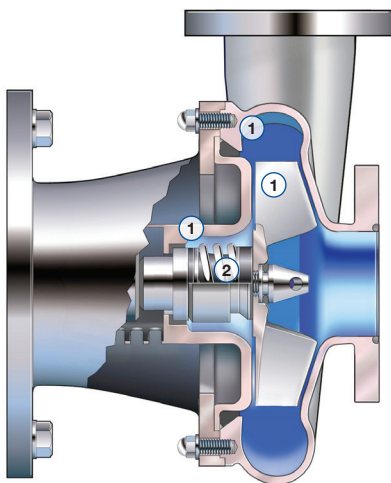
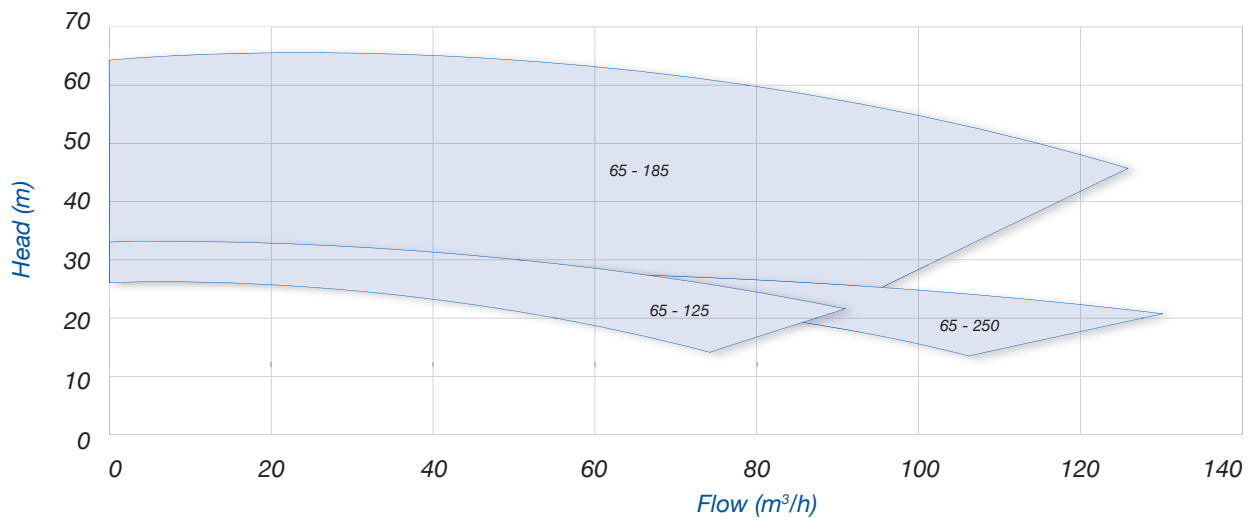
- High pump efficiency resulting in lower energy consumption
- Low NPSH values: less risk on cavitation
- Electropolished
- Easy construction and easy maintenance: Less downtime
- Standard components
- Easy to install
- 1 mechanical seal diameter for the entire range
- Robust construction

Technical specifications

Max. flow rate	120 m³/h
Max. differential head	65 m
Max. liquid viscosity	500 cP
Max. temperature	140°C
Impeller type	Open and semi-open
Max. free passage	25 mm
Max. motor power	22 kW
Max. speed	3000 / 3600 rpm
Available frequency	50 / 60 Hz
Connections	BSP thread, industrial flanges acc. to EN 1092-1/01 and ANSI
Materials wetted parts	Stainless steel 316L or similar
Available materials o-ring	EPDM, FKM, FEP-FKM, FFKM, Silicone
Mechanical seal configuration	Single, quench, double
Surface finish	Industrial finish: welds are not hand polished. Final surface treatment: electropolished
Certificates & Legislation	1935/2004 EC, FDA, ATEX, EU N° 547/2012

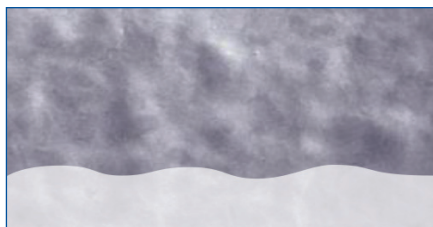


Performance curves at 2900 rpm

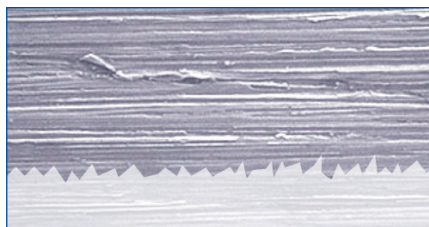


Specifications

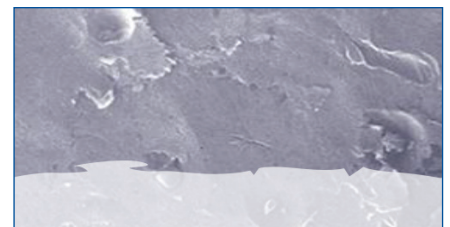
- Solid design thanks to investment cast casings and impellers (1)
- Standardized mechanical seals to EN 12756
- FDA approved bellows mechanical seals or balanced O-ring seals (2)
- 1 mechanical seal diameter 33 mm up to 22 kW motor power
- Use of standardized components
- Electropolished design (for wetted & non-wetted parts); easy to clean and increased
- corrosion resistance



Electropolished

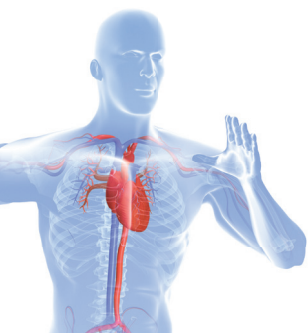


Mechanical polishing 240 grit



Glass bead blasted

MCP2_Industrial_pump_series_Technosheet_rev01_2016_(eu)



Find your local supplier at www.verder-liquids.com

For construction, installation and floor mounting drawings
please contact your local authorised Verder® distributor.

VERDER
passion for pumps