

28420 Series

Hygienic Stainless Steel Head Kit Pump

Features

- Self primes from dry up to 5.0 metres
- Flows up to 200 litres per minute
- Pressure up to 2.5 bar†
- Handles soft solids - max. 16mm diameter
- Certified to US 3A Standard 02-09
- Clean-In-Place (CIP) or easy strip clean
- Handles viscosities up to 10,000 centiPoise
- Minimal shear to thixotropic fluids
- Fits IEC standard motor B3/B14, frame 90



Typical Applications

- Foods, sauces, doughs, preserves, liquid egg, meat pastes
- Dairy products, milk, cream, yoghurt, cheeses
- Cosmetics, toothpaste, shampoos, soaps
- Pharmaceutical creams & lotions
- Wines, beers, soft drinks, fruit juices & syrups
- Ingredients unloading and transfer
- Tank filling and emptying
- Recirculation and mixing
- Portion and container filling
- Brine injection
- Sampling, filtration and more

Specifications

Seal : Carbon / Ceramic mechanical face seal
Tungsten Carbide / Ceramic hard faced seal
Flushed options for crystallising fluids

Seal Elastomer : Food grade Nitrile

Pump Head : Stainless steel 316, machined interior and electropolished exterior finish

End Cover : Stainless steel 316 grade

Shaft : Stainless steel 316 grade shaft extension

Bearings : Uses motor bearings

Motor Adaptor : Epoxy coated cast iron

Ports :	1½"	Tri-Clamp	28420-1xxx
	38mm	IDF/ISS	28420-3xxx
	1½"	RJT to BS1864	28420-4xxx
	1½"	3A Bevel Seat	28420-5xxx
	40mm	DIN 11851	28420-6xxx
	38mm	SMS 1145	28420-7xxx

Model Range

Weight : 6.6kg

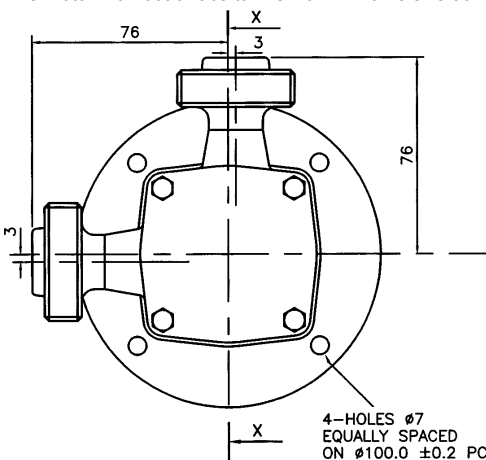
Pressure options	Medium - Max 2.5 bar†			
Elastomer option	3A Neoprene	E.P.D.M.		
Temperature range	4°C to 65°C	0°C to 120°C		
Mechanical Seal Options				
Carbon/Ceramic	28420-x115			
Tungsten Carbide/Ceramic hard faced	28420-x215			
Flushed Mechanical Seal				
Tungsten Carbide/Ceramic hard faced	28420-x715			
Carbon/Ceramic				
For models not listed above, consult distributor or factory, 'x' Substitute port code from table above				
Note : it is not recommended to start the pump at extremes of the temperature range, impeller damage may occur				
For Installation, Operating, Maintenance and Safety Instructions refer to form 43001-0543				



WARNING Explosion hazard. Do not pump gasoline, solvents, thinners or other flammable liquids. To do so can cause an explosion resulting in injury or death.

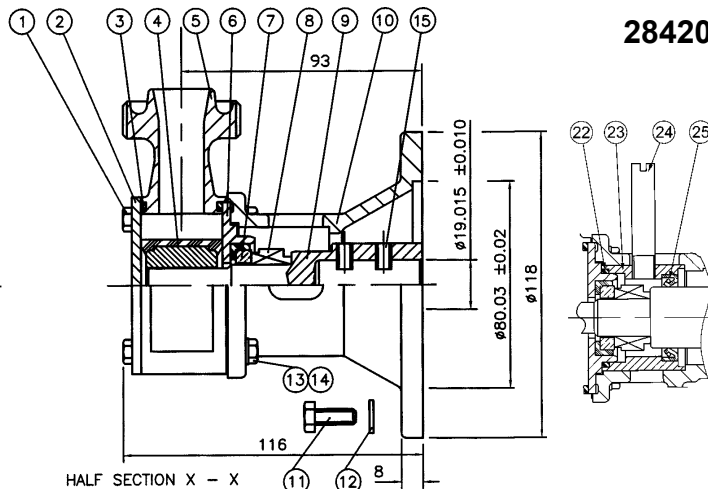
† Pressures over 1.4 bar may reduce motor shaft life

Fits IEC motor with foot & face to IEC B3/B14 frame size 90



Dimensions in mm

For performance data refer to the 200 size flexible impeller pump performance curves



28420 Series

Flushed Seal

Parts List

Key	Description	Qty	Part Number
1	Screw	4	X3001-207F
2	Endcover	1	28405-0020
3	O'Ring *	2	See right
4	Impeller*	1	See right
5	Body	1	See right
6	Wearplate	1	28436-0000
7 / 8	Seal Assembly *	1	See right
9	Shaft Extension	1	28427-0001
10	Motor Adaptor	1	28423-0000
11	Screw	4	X3001-209F
12	Washer	4	X3080-101K
13	Screw	4	X3001-209F
14	Washer	4	X3080-101F
15	Set Screw	2	X3009-207A
22	O-Ring	1	X4020-261A
23	Seal Housing	1	28412-0000
24	Tube	2	21844
25	Seal	1	SP2701-0915

Parts marked * Contained in service kit

Spare Parts & Service Kits

Pressure Rating	Medium	
3 O-Ring	Nitrile	X4020-399A
4 Impeller	3A Neoprene	14346-0005B
	E.P.D.M.	14346-0002B
5 Body	Tri-Clamp	28404-1000
	IDF/ISS	28404-3000
	RJT	28404-4000
	Bevel Seat	28404-5000
	DIN	28404-6000
	SMS	28404-7000
7 / 8 Seals	Std Mech.	28431-0103B
	Hard Faced	28431-0203B
Service Kit	3A Neoprene	SK378-0115
	E.P.D.M.	

Models with Neoprene and E.P.D.M. impellers use Nitrile elastomers on seals and O-rings.

NOTE:- Service Kits contain standard mechanical seals. For hard faced seals, order parts separately.

Other Available Options

Pedestal pumps, for higher pressure capability.