

28600 Series

Hygienic Stainless Steel Pedestal Pump

Features

- Self primes from dry up to 5.0 metres
- Flows up to 520 litres per minute
- Pressure up to 5.0 bar
- Handles soft solids - max. 18mm diameter
- Certified to US 3A Standard 02-09
- Clean-In-Place (CIP) or easy strip clean
- Handles viscosities up to 50,000 centiPoise
- Minimal shear to thixotropic fluids
- Quick release end cover clamp

Typical Applications

- Foods, sauces, doughs, preserves, liquid egg, meat pastes
- Dairy products, milk, cream, yoghurt, cheeses
- Cosmetics, toothpaste, shampoos, soaps
- Pharmaceutical creams & lotions
- Wines, beers, soft drinks, fruit juices & syrups
- Ingredients unloading and transfer
- Tank filling and emptying
- Recirculation and mixing
- Portion and container filling
- Brine injection
- Sampling, filtration and more

Model Range

Pressure options	Standard - Max 2.0 bar		High - Max 5.0 bar	
Elastomer option	3A Neoprene		3A Neoprene	
Temperature range	4°C to 65°C		4°C to 65°C	
Mechanical Seal Options				
Carbon/Stainless Steel	28600-x105		28600-x125	
Tungsten Carbide/SS hard faced			28600-x225	
Flushed Mechanical Seal				
Tungsten Carbide/SS hard faced			28600-x725	
Carbon/Stainless Steel			28600-x925	

For models not listed above, consult distributor or factory, 'x' Substitute port code from table above

Note : it is not recommended to start the pump at extremes of the temperature range, impeller damage may occur

For Installation, Operating, Maintenance and Safety Instructions refer to form 43001-0543



WARNING Explosion hazard. Do not pump gasoline, solvents, thinners or other flammable liquids. To do so can cause an explosion resulting in injury or death.



WARNING Injury hazard. Exposed pulleys and belts can cause injury. Install shield around pulleys and belts. Stay clear while machinery is operating.



Specifications

Seal : Carbon / Stainless Steel mechanical face
Tungsten Carbide / Stainless Steel hard faced
Flushed options for crystallising fluids

Seal Elastomer : Food grade Nitrile O-rings

Pump Head : Stainless steel 316, machined interior and electropolished exterior finish

End Cover : Stainless steel 316 grade

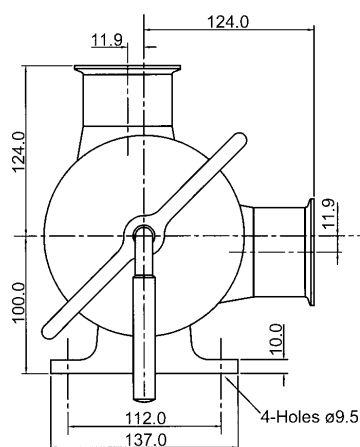
Shaft : Stainless steel 316 grade

Bearings : Greased ball bearings

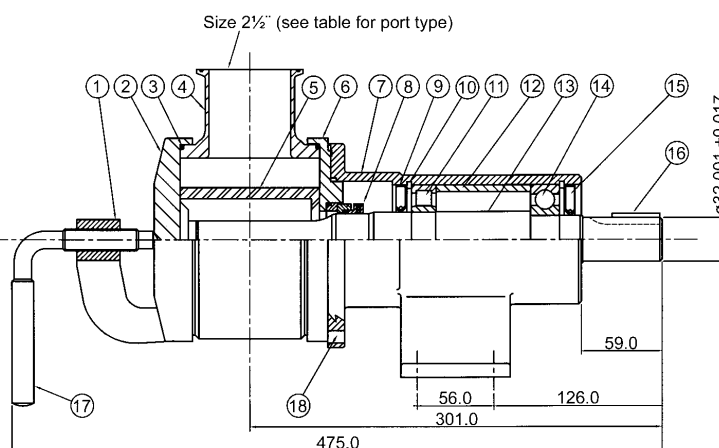
Bearing Housing : Epoxy coated cast iron

Ports :	2½"	Tri-Clamp	28600-1xxx
	63.5mm	IDF/ISS	28600-3xxx
	2½"	RJT to BS1864	28600-4xxx
	2½"	3A Bevel Seat	28600-5xxx
	65mm	DIN 11851	28600-6xxx
	63.5mm	SMS 1145	28600-7xxx

Weight : 22.0kg

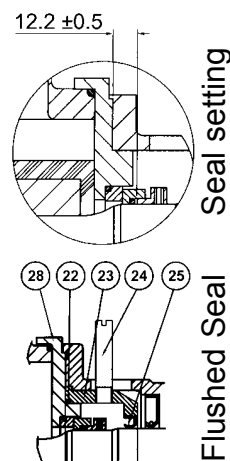


Dimensions in mm



For performance data refer to the 500 size flexible impeller pump performance curves

28600 Series



Parts List

Key	Description	Qty	Part Number
1	Clamp Frame	1	21909-0000
2	Endcover	1	22007
3	O'Ring *	2	See right
4	Body	1	See right
5	Impeller*	1	See right
6	Wearplate	1	28606-0000
7	Bearing Housing	1	28503-0000
8	Seal Assembly *	1	See right
9	Lip seal (Front Bearing)	1	SP2701-0912
10	Retaining Ring	2	SP1701-437
11	Bearing (Front)	1	SP2601-23
12	Spacer	1	28643-0000
13	Shaft	1	28607-0000
14	Bearing (Rear)	1	SP2601-0460
15	Lip seal (Rear Bearing)	1	SP2701-0930
16	Key	1	X4000-528A
17	Clamp Screw	1	21908
18	Locating Peg	2	28649-0000
22	O-Ring	1	X4020-269A
23	Seal Housing	1	28512-0000
24	Tube	2	21844
25	Seal	1	SP2701-0915
28	Wearplate	1	28616-0000

Parts marked * Contained in service kit

Spare Parts & Service Kits

Pressure Rating			Standard	High
3	O-Ring	Nitrile	SP2000-1213	SP2000-1213
4	Impeller	3A Neoprene	8500-0005	21899-0005B
5	Body	Tri-Clamp	22004-1001	22004-1001
		IDF/ISS	22004-3001	22004-3001
		RJT	22004-4001	22004-4001
		Bevel Seat	22004-5001	22004-5001
		DIN	22004-6001	22004-6001
		SMS	22004-7001	22004-7001
8	Seals	Std Mech.	SP6080-0382	SP6080-0382
		Hard Faced	SP6080-0390	SP6080-0390
Service Kit		3A Neoprene		SK395-0125
Models with Neoprene impellers use Nitrile elastomers or seals and O-rings.				
NOTE:- Service Kits contain standard mechanical seals. For hard faced seals, order parts separately.				

Models with Neoprene impellers use Nitrile elastomers on seals and O-rings.

NOTE:- Service Kits contain standard mechanical seals. For hard faced seals, order parts separately.

Other Available Options

Head kits, for close coupling to IEC motors.