



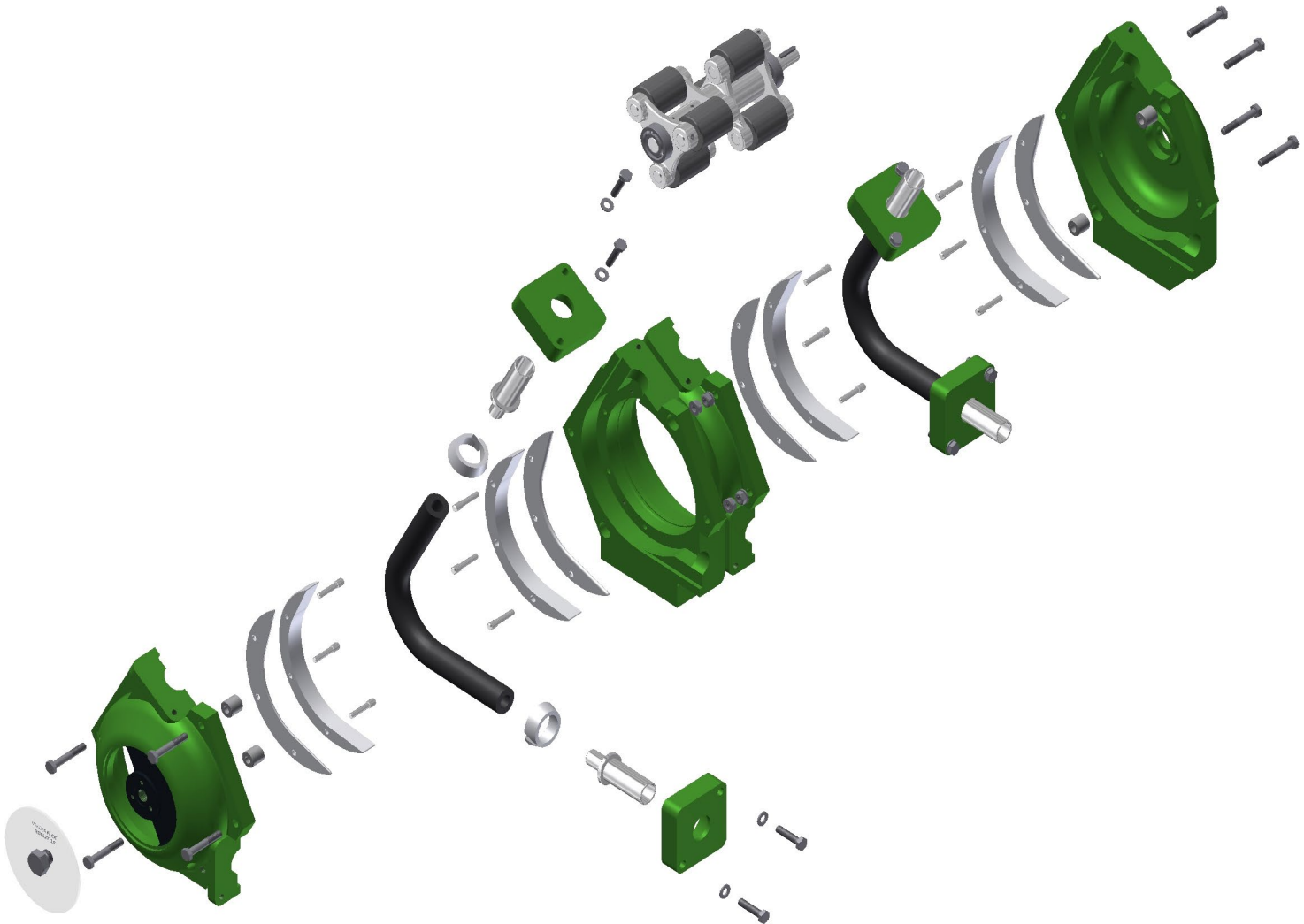
Peristaltic Hose Pump

Spare Parts List

Verderflex Rollit
15 - 35 TP

Version 1.0v-10/2015

Print-No. 01





Version 1.0v-10/2015
Print-No. 01

Verderflex Rollit 15 - 35 TP

Rollit 15-35 TP Spare Parts List

Table 1 contains a list of spares to help maintain and repair the Rollit 15-35 TP peristaltic pumps. Your Verder distributor will be able to advise you where genuine Verderflex® spares can be purchased.

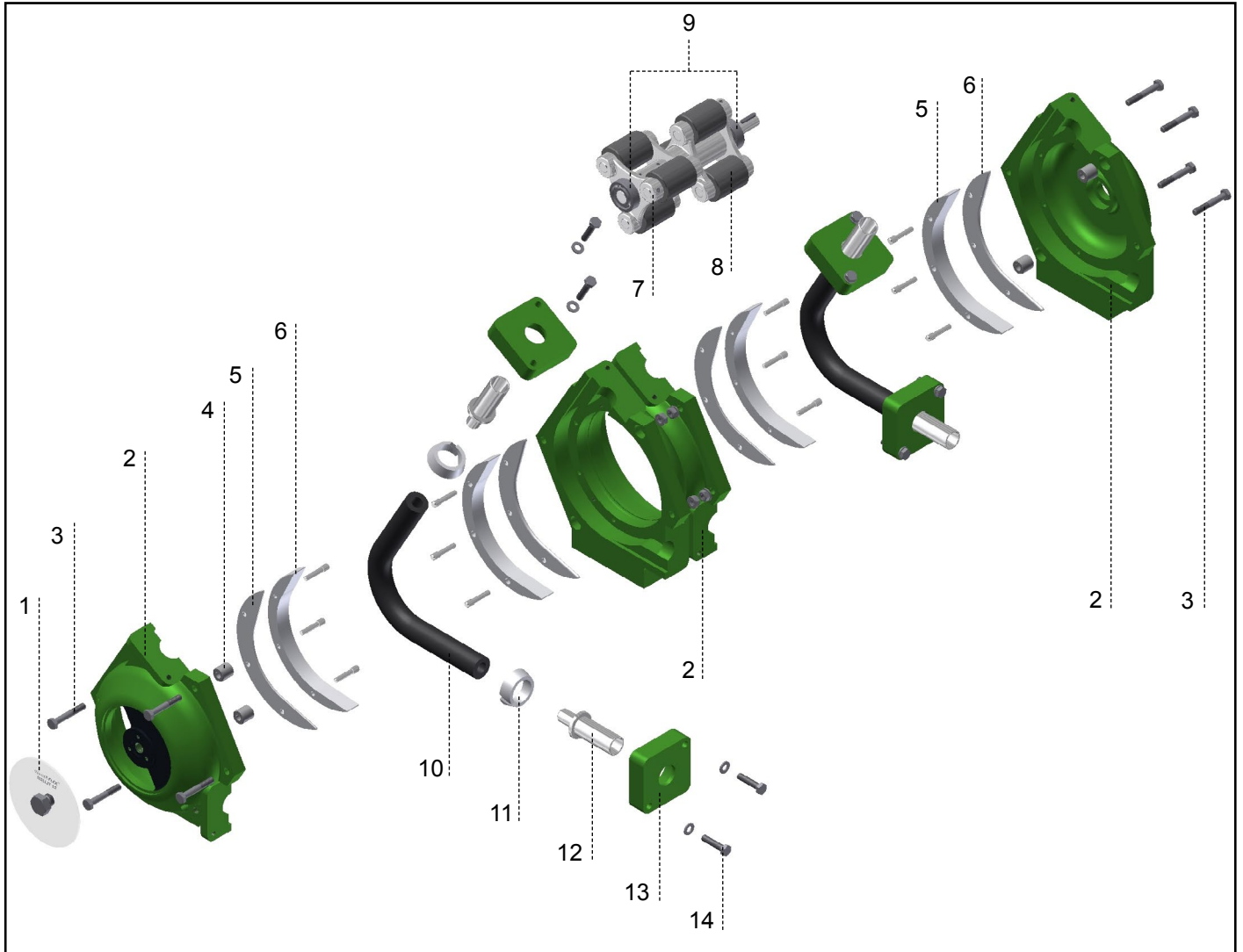


Figure 2 Layout (generic view)

- | | | | | | |
|---|------------------|----|-------------------------|----|-------------------------|
| 1 | Casing cover | 6 | Teflon inserts complete | 11 | Clamping ring |
| 2 | Pump casing | 7 | Rotor complete | 12 | Hose tail |
| 3 | Casing fasteners | 8 | Rollers complete | 13 | Counter flange |
| 4 | Centering bush | 9 | Bearing | 14 | Counter flange fastener |
| 5 | Guide rails | 10 | Pump hose | | |

Table 1 Rollit 15-35 TP Spare Parts List


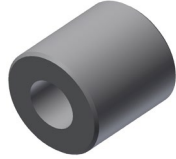



Ref	Item	Part No		Qty	Image
1	Casing cover Plexiglass	R 15 TP	114.100.032	1	
		R 25 TP	114.100.033		
		R 35 TP	114.100.034		
	Casing cover SS Meets Atex	R 15 TP	114.100.037	1	
		R 25 TP	114.100.038		
		R 35 TP	114.100.039		
3	Casing fasteners	R 15 TP	M8 x 50 Steel BZP	8	
		R 25 TP	M8 x 50 Steel BZP		
		R 35 TP	M8 x 60 Steel BZP		
4	Centering bush Set of 2 Pieces	R 15 TP	-	4	
		R 25 TP	-		
		R 35 TP	-		
5	Guide rails	R 15 TP	114.100.059	2	
		R 25 TP	114.100.060		
		R 35 TP	114.100.061		
6	Teflon inserts complete	R 15 TP	114.100.022	2	
		R 25 TP	114.100.023		
		R 35 TP	114.100.024		
7	Rotor complete	R 15 TP	114.100.074	1	
		R 25 TP	114.100.075		
		R 35 TP	114.100.076		
8	Rollers complete Set Set of 3 Pieces	R 15 TP	114.100.017	2	
		R 25 TP	114.100.018		
		R 35 TP	114.100.019		

Table 1 Rollit 15-35 TP Spare Parts List (continued)






Ref	Item	Part No			Qty	Image
9	Bearing Set of 2 Pieces	R 15 TP	114.100.068		1	
		R 25 TP	114.100.069			
		R 35 TP	114.100.070			
11	Clamping ring	R 15 TP	114.100.062		4	
		R 25 TP	114.100.063			
		R 35 TP	114.100.064			
12	Hose tail	R 15 TP nominal size 25	PP	114.100.042	4	
			SS 1.4571	114.100.047		
		R 25 TP nominal size 31	PP	114.100.043		
			SS 1.4571	114.100.048		
		R 35 TP nominal size 51	PP	114.100.065		
			SS 1.4571	114.100.066		
12.1	Hose tail with tread DIN ISO 228	R 15 TP nominal size 3/4"	SS 1.4571	on request	4	
		R 25 TP nominal size 1"	SS 1.4571	on request		
		R 35 TP nominal size 1 1/2"	SS 1.4571	on request		
12.2	Hose tail with tread NPT	R 15 TP nominal size 3/4"	SS 1.4571	on request	4	
		R 25 TP nominal size 1"	SS 1.4571	on request		
		R 35 TP nominal size 1 1/2"	SS 1.4571	on request		

Table 1 Rollit 15-35 TP Spare Parts List (continued)






Ref	Item	Part No			Qty	Image
12.3	Hose tail with tread BSPT	R 15 TP nominal size 3/4"	SS 1.4571	on request	4	
		R 25 TP nominal size 1"	SS 1.4571	on request		
		R 35 TP nominal size 1 1/2"	SS 1.4571	on request		
13	Counter flange Set of 2 pieces	R 15 TP	on request		2	
		R 25 TP	on request			
		R 35 TP	on request			
13.1	Thread flange DIN 2633	R 15 TP nominal size DN 20	SS 1.4571	on request	4	
		R 25 TP nominal size DN 25	SS 1.4571	on request		
		R 35 TP nominal size DN 40	SS 1.4571	on request		
13.2	Thread flange ANSI B 16.5 150 lbs	R 15 TP nominal size 3/4"	SS 1.4571	on request	4	
		R 25 TP nominal size 1"	SS 1.4571	on request		
		R 35 TP nominal size 1 1/2"	SS 1.4571	on request		
14	Counter flange fastener: - bolt and washer.	R 15 TP	M8 x 35 Steel BZP		8	
	Counter flange fastener: - bolt, washer and nut.	R 25 TP	M10 x 60 Steel BZP			
		R 35 TP	M12 x 65 Steel BZP			

Table 2 Rollit 15-35 TP Hose options


Item Description	Part No		Qty	Image
Hose options NR	R 15 TP	114.100.056	2	
	R 25 TP	114.100.057		
	R 35 TP	114.100.058		

Table 3 Rollit 15-35 TP Special Grease

Item Description	Part No	Qty
Rollit Special Grease	114.100.072	250 gr.
	on request	1000 gr.