

Verderflex

Dura 65



VERDERFLEX®

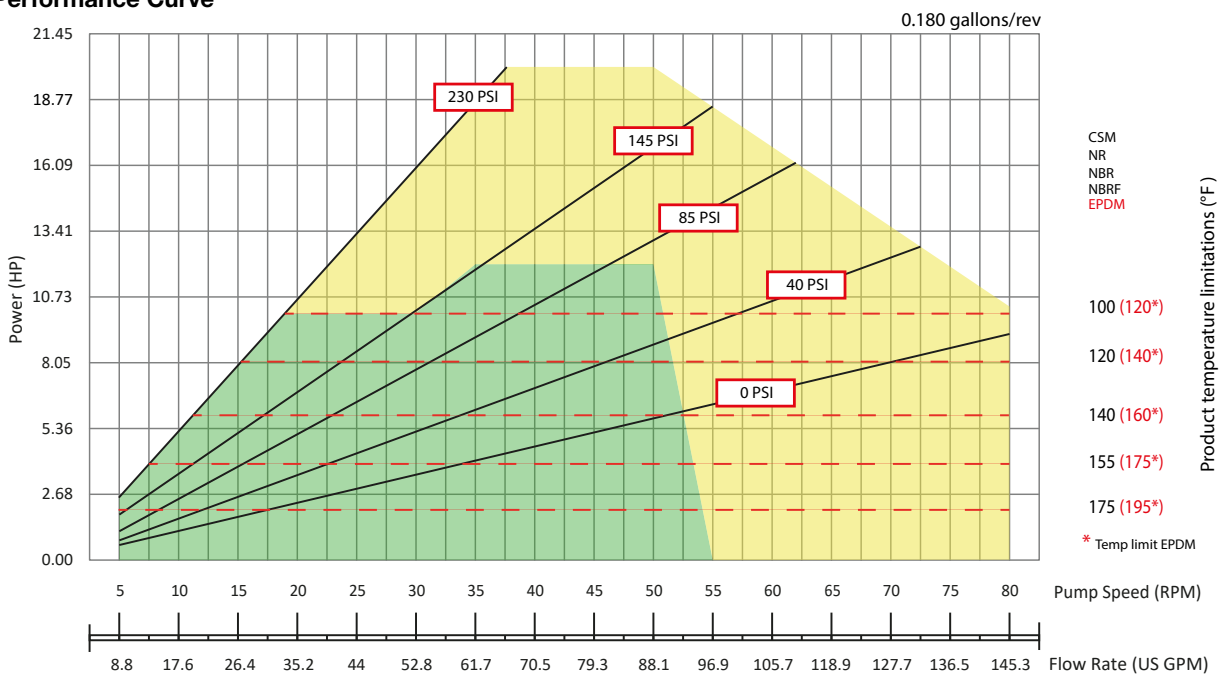
Verderflex Dura 65 Peristaltic Hose Pump

Designed for applications such as Metering, Dosing, and Transfer duties (strong advantages on sludges, slurries and abrasives)

Benefits

- Class leading performance of up to 145.3 GPM and pressures of up to 230 PSI.
- Minimised downtime and reduced cost of ownership with in-situ hose change/simplified spare holding requirement.
- Self-priming (capable of a suction lift of 31 ftwc), dry running low shear design ideal for abrasive/ solid slurries.
- With the peristaltic advantages of seal less and valve less pumping operation and directly proportional flow stability and repeatability.

Performance Curve



Continuous use Intermittent use
*Shimmable max. 1 hour running
min. 1 hour stopped

*For the number of shims required, please refer to the manual.

Technical data

Maximum Flow Rate	145.3 GPM
Maximum Discharge Pressure	230 PSI
Maximum Suction Lift	31 ftwc
Hose ID	2.56"
Maximum Medium Temperature	176°F ¹⁾
Maximum Incompressible Solid Size	16/64"
Maximum Compressible Solid Size	41/64"

¹⁾ Continuous use with NR hose

Features

- Optional FDA CFR21 and EC/1935, optional ATEX
- Rotor fully supported by casing bearing
- Ball valve on drain port
- Angled metal filling port
- Service access port on front cover
- Lifting point for front cover
- Lubricant level gauge (optional)



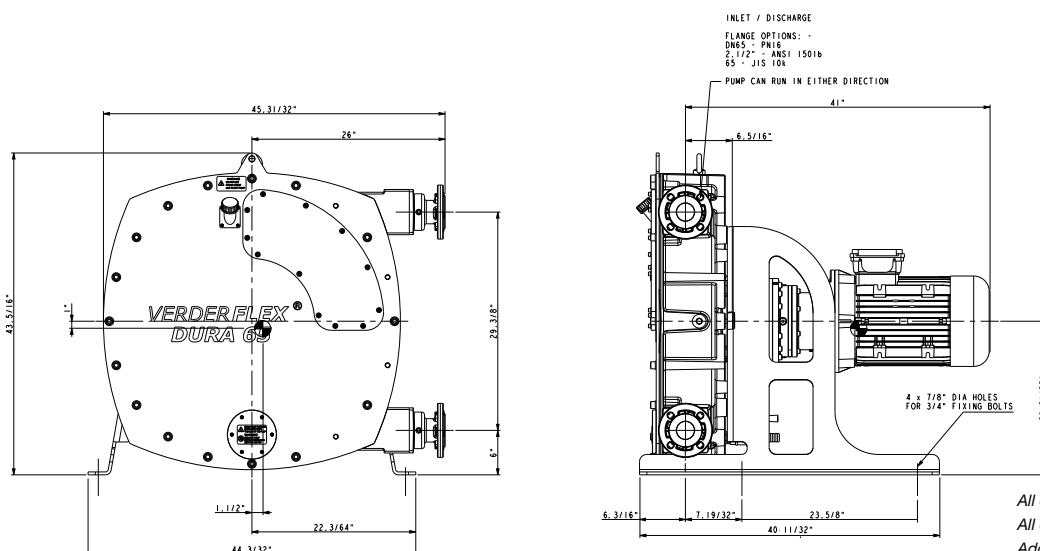
Materials

Description	Material	Paint Detail
Pump Housing	SG Iron	Green Powder Coated
Front Cover	Steel	Grey Powder Coated
Window	Plexyglass	
Rotor	SG Iron	Green Powder Coated
Rotor shoes	Cast Aluminium Optional Material: Stainless Steel	
Bearing Housing	SG Iron	Green Powder Coated
Front bearing	Deep Groove Ball Race	
Rear bearing	Deep Groove Ball Race	
Drive Coupling	SG Iron	Green Powder Coated
Shaft Seals	FKM	
Mounting Frame	Steel	Grey Powder Coated
Hose options	Natural Rubber (NR) Options: Nitrile Buna Rubber (NBR) Ethylene Propylene Diene Monomer (EPDM), Food Grade Nitrile Buna (NBRF) and Hypalon® (CSM)	
Port Flange	CF-8M (316) Stainless Steel Universal slotted design fits with DIN PN16 DN 65, ANSI 150# 2½" & JIS10K Options: 316 Stainless Steel with Polypropylene or P.V.D.F Insert ¹⁾ , DIN11851 Hygienic, DIN32676 Tri-clamp	
Lubricant options	Verderlube - Glycerine based lubricant ²⁾ Verdersil - Silicone based lubricant ³⁾	
Bareshaft Weight	1056 lbs	
Weight	1278 to 1588 lbs, depending on the Bonfiglioli Gearbox and Motor Fitted	

¹⁾ Temperature Limit for PP insert is 104 °F and for PVDF insert is 176 °F.

²⁾ Temperature Limit for Verderlube is 122 °F.

³⁾ Suitable for application above 122 °F, but subject to maximum temperature limit of the hose and applications involving strong oxidising agents and nitrogenous compounds.



All dimensions are in inches.
All dimensions and weights are for guidance only.
Add dimensions of plan view to the above drawings.

Trademarks

VERDERFLEX® is a registered trademark of Verder International B.V. No permission is granted to use any Verder, trademarks or trade names included in this document without the prior written agreement of Verder International B.V.

Tri-clamp® is a registered trademark of Alfa Laval Corporate AB.

Hypalon® is a registered trademark of RSCC Wire & Cable LLC.

© Verder International B.V

Find your local supplier at www.verderflex.com

For construction, installation and floor mounting drawings please contact your local authorised Verderflex® distributor.

VERDER
passion for pumps

