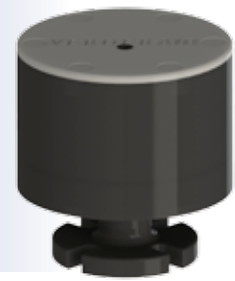


Verderair

PD-P50



PD-P50



VERDERAIR

Technical data PD-P50

Nominal port size	PD-P50 xx xx TN	2" NPT male
	PD-P50 xx xx FS	Flanged DIN DN50, ANSI 2"
Air inlet		R 1/4"
Weight [kg]	PD-P50 EA xx TN	11,6
	PD-P50 EG xx TN	10,3
	PD-P50 TA xx TN	15
	PD-P50 TG xx TN	13,8
	PD-P50 GG xx TN	10,3
	PD-P50 UG xx TN	13,2
	PD-P50 EA xx FS	12
	PD-P50 EG xx FS	10,7
	PD-P50 TA xx FS	16
	PD-P50 TG xx FS	14,8
	PD-P50 GG xx FS	10,6
	PD-P50 UG xx FS	14,2
Max. operation pressure [Bar]		7
Max. operating temperature [°C]	PD-P50 EA or PD-P50 EG	70
	PD-P50 TA	120
	PD-P50 GG	70
	PD-P50 TG or PD-P50 UG	70

CODE PD-P50 No.1 No.2 No.3 No.4

No.1 Liquid Housing

- E = Polyethylene (PE UHMW)
-  G = Conductive Polyethylene (PE UHMW)
- T = PTFE
-  U = Conductive PTFE

no.2 Air Section

-  G = Conductive Polyethylene (PE UHMW)
- A = Polyamide

No.3 Diaphragm

- EO = EPDM Overmolded
- TO = PTFE Overmolded


No.4 Fluid Connection

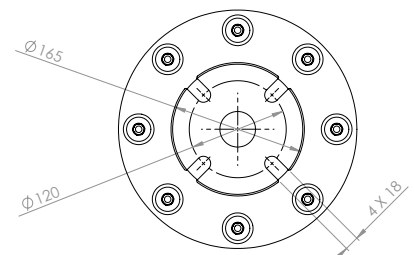
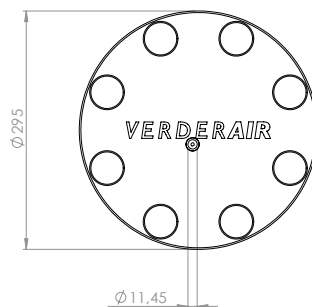
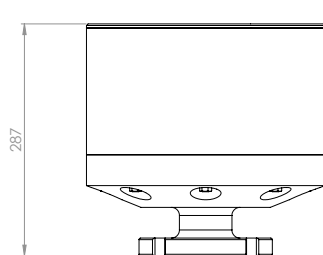
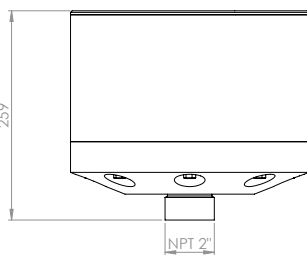
- TN = NPT Threaded male
- FS = Flanged Slotted for DIN/ANSI/JIS

Note: Not all combinations are available

EXAMPLE PUMP TYPE

EXAMPLE : PD-P50EA EO TN

 II 2GD c II B T70



Dimensions in mm

PD-P50_Techno_Rev01-2013_UK_(eu)

Find your local supplier at www.verderair.com

VERDER
passion for pumps